

Product datasheet for **TA805215BM**

p16INK4A (CDKN2A) Mouse Monoclonal Antibody (HRP conjugated) [Clone ID: OTI2C5]

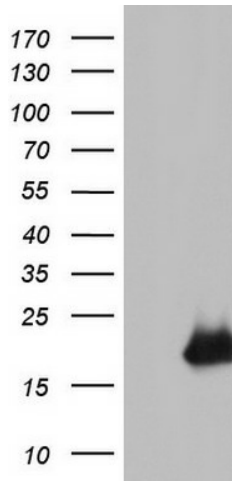
Product data:

Product Type:	Primary Antibodies
Clone Name:	OTI2C5
Applications:	IF, IHC, WB
Recommended Dilution:	WB 1:200 - 1:1000, IHC 1:150
Reactivity:	Human
Host:	Mouse
Isotype:	IgG1
Clonality:	Monoclonal
Immunogen:	Full length human recombinant protein of human CDKN2A (NP_000068) produced in E.coli.
Formulation:	PBS (pH 7.3) containing 1% BSA, 50% glycerol.
Concentration:	0.5 mg/ml
Purification:	Purified from mouse ascites fluids or tissue culture supernatant by affinity chromatography (protein A/G)
Conjugation:	HRP
Storage:	Store at -20°C as received.
Stability:	Stable for 12 months from date of receipt.
Predicted Protein Size:	16.4 kDa
Gene Name:	cyclin-dependent kinase inhibitor 2A
Database Link:	NP_000068 Entrez Gene 1029 Human Q8N726
Synonyms:	ARF; CDK4I; CDKN2; CMM2; INK4; INK4A; MLM; MTS-1; MTS1; P14; P14ARF; P16; P16-INK4A; P16INK4
Protein Families:	Druggable Genome
Protein Pathways:	Bladder cancer, Cell cycle, Chronic myeloid leukemia, Glioma, Melanoma, Non-small cell lung cancer, p53 signaling pathway, Pancreatic cancer, Pathways in cancer

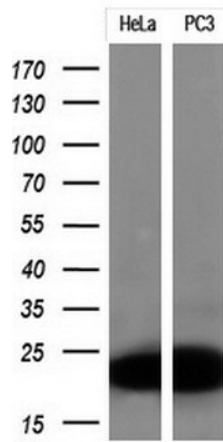


[View online »](#)

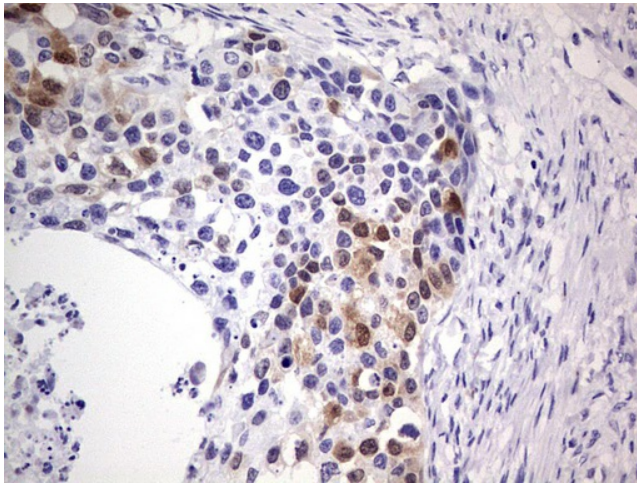
Product images:



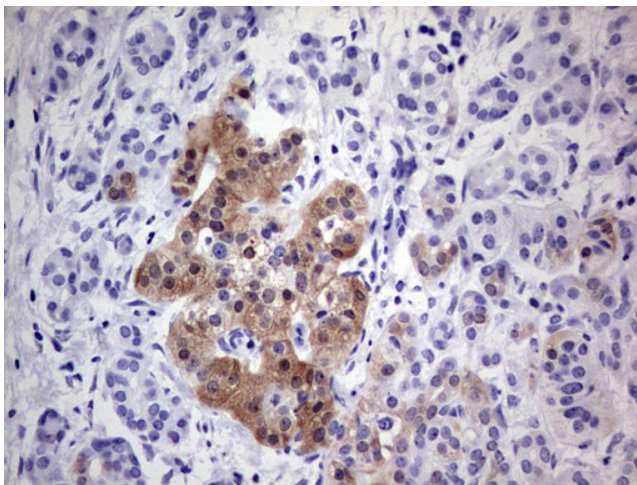
HEK293T cells were transfected with the pCMV6-ENTRY control (Left lane) or pCMV6-ENTRY CDKN2A ([RC220937], Right lane) cDNA for 48 hrs and lysed. Equivalent amounts of cell lysates (5 ug per lane) were separated by SDS-PAGE and immunoblotted with anti-CDKN2A. Positive lysates [LY400022] (100ug) and [LC400022] (20ug) can be purchased separately from OriGene.



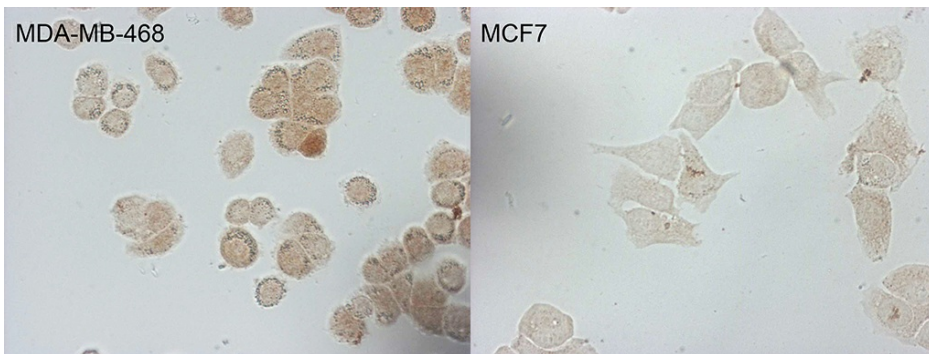
Western blot analysis of extracts (10ug) from 2 different cell lines by using anti-CDKN2A monoclonal antibody at 1:200.



Immunohistochemical staining of paraffin-embedded Carcinoma of Human kidney tissue using anti-CDKN2A mouse monoclonal antibody. (Heat-induced epitope retrieval by 1mM EDTA in 10mM Tris, pH8.5, 120°C for 3min, [TA805215])



Immunohistochemical staining of paraffin-embedded Carcinoma of Human pancreas tissue using anti-CDKN2A mouse monoclonal antibody. (Heat-induced epitope retrieval by 1mM EDTA in 10mM Tris, pH8.5, 120°C for 3min, [TA805215])



Immunocytochemistry staining of MDA-MB-468 cells using anti-CDKN2A mouse monoclonal antibody ([TA805215]). The right is MCF7 cells as negative control (1:100).