

Product datasheet for **TA805215**

p16INK4A (CDKN2A) Mouse Monoclonal Antibody [Clone ID: OTI2C5]

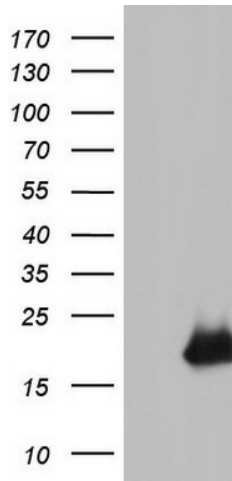
Product data:

| | |
|--------------------------------|--|
| Product Type: | Primary Antibodies |
| Clone Name: | OTI2C5 |
| Applications: | IF, IHC, WB |
| Recommended Dilution: | WB 1:200 - 1:1000, IHC 1:150 |
| Reactivity: | Human |
| Host: | Mouse |
| Isotype: | IgG1 |
| Clonality: | Monoclonal |
| Immunogen: | Full length human recombinant protein of human CDKN2A (NP_000068) produced in E.coli. |
| Formulation: | PBS (pH 7.3) containing 1% BSA, 50% glycerol and 0.02% sodium azide. |
| Concentration: | 1 mg/ml |
| Purification: | Purified from mouse ascites fluids or tissue culture supernatant by affinity chromatography (protein A/G) |
| Conjugation: | Unconjugated |
| Storage: | Store at -20°C as received. |
| Stability: | Stable for 12 months from date of receipt. |
| Predicted Protein Size: | 16.4 kDa |
| Gene Name: | cyclin-dependent kinase inhibitor 2A |
| Database Link: | NP_000068 Entrez Gene 1029 Human Q8N726 |
| Synonyms: | ARF; CDK4I; CDKN2; CMM2; INK4; INK4A; MLM; MTS-1; MTS1; P14; P14ARF; P16; P16-INK4A; P16INK4 |
| Protein Families: | Druggable Genome |
| Protein Pathways: | Bladder cancer, Cell cycle, Chronic myeloid leukemia, Glioma, Melanoma, Non-small cell lung cancer, p53 signaling pathway, Pancreatic cancer, Pathways in cancer |

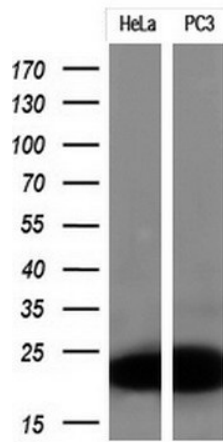


[View online »](#)

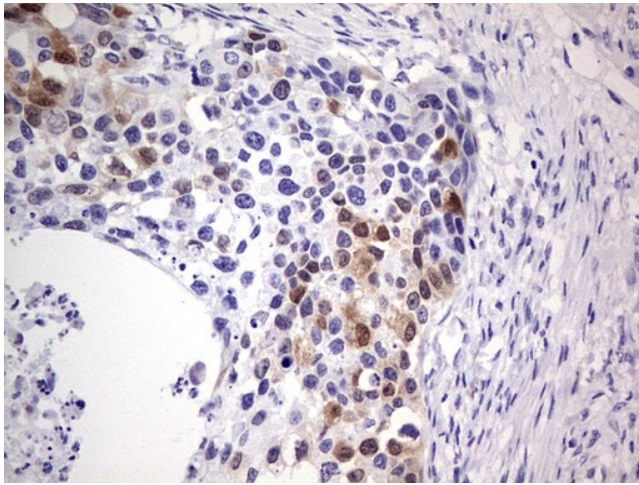
Product images:



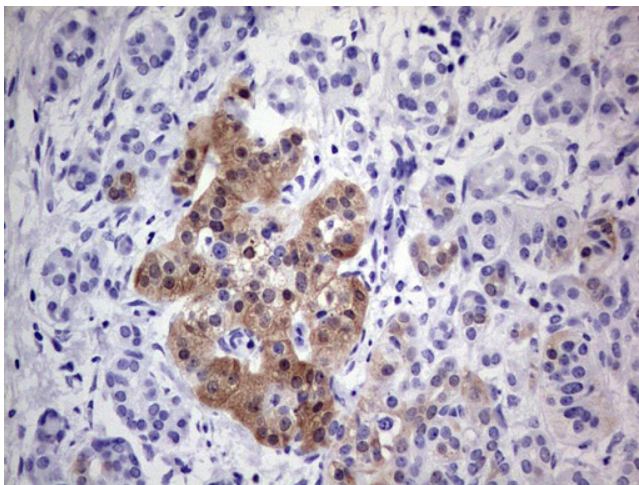
HEK293T cells were transfected with the pCMV6-ENTRY control (Left lane) or pCMV6-ENTRY CDKN2A ([RC220937], Right lane) cDNA for 48 hrs and lysed. Equivalent amounts of cell lysates (5 ug per lane) were separated by SDS-PAGE and immunoblotted with anti-CDKN2A. Positive lysates [LY400022] (100ug) and [LC400022] (20ug) can be purchased separately from OriGene.



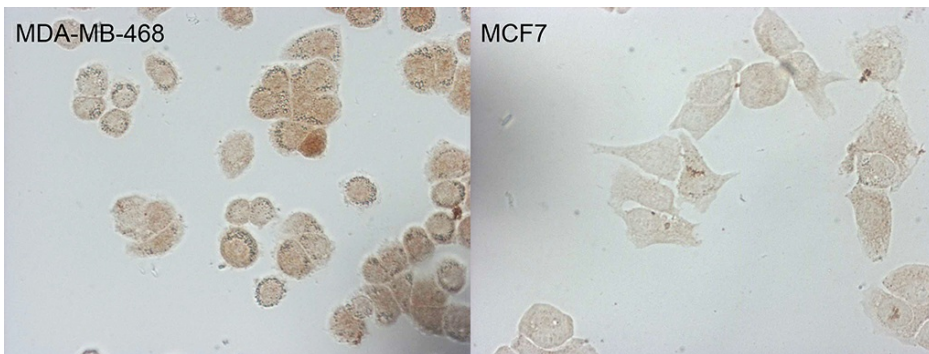
Western blot analysis of extracts (10ug) from 2 different cell lines by using anti-CDKN2A monoclonal antibody at 1:200.



Immunohistochemical staining of paraffin-embedded Carcinoma of Human kidney tissue using anti-CDKN2A mouse monoclonal antibody. (Heat-induced epitope retrieval by 1mM EDTA in 10mM Tris, pH8.5, 120°C for 3min, TA805215)



Immunohistochemical staining of paraffin-embedded Carcinoma of Human pancreas tissue using anti-CDKN2A mouse monoclonal antibody. (Heat-induced epitope retrieval by 1mM EDTA in 10mM Tris, pH8.5, 120°C for 3min, TA805215)



Immunocytochemistry staining of MDA-MB-468 cells using anti-CDKN2A mouse monoclonal antibody (TA805215). The right is MCF7 cells as negative control (1:100).