

Product datasheet for **TA805212**

TWIST2 Mouse Monoclonal Antibody [Clone ID: OTI6H10]

Product data:

Product Type:	Primary Antibodies
Clone Name:	OTI6H10
Applications:	WB
Recommended Dilution:	WB 1:2000
Reactivity:	Human, Mouse, Rat
Host:	Mouse
Isotype:	IgG1
Clonality:	Monoclonal
Immunogen:	Full length human recombinant protein of human TWIST2 (NP_476527) produced in E.coli.
Formulation:	PBS (pH 7.3) containing 1% BSA, 50% glycerol and 0.02% sodium azide.
Concentration:	1 mg/ml
Purification:	Purified from mouse ascites fluids or tissue culture supernatant by affinity chromatography (protein A/G)
Conjugation:	Unconjugated
Storage:	Store at -20°C as received.
Stability:	Stable for 12 months from date of receipt.
Predicted Protein Size:	17.9 kDa
Gene Name:	twist family bHLH transcription factor 2
Database Link:	NP_476527 Entrez Gene 13345 Mouse Entrez Gene 59327 Rat Entrez Gene 117581 Human Q8WVJ9
Background:	Basic helix-loop-helix (bHLH) transcription factors have been implicated in cell lineage determination and differentiation. The protein encoded by this gene is a bHLH transcription factor and shares similarity with another bHLH transcription factor, Twist. It is thought that during osteoblast development this protein may inhibit osteoblast maturation and maintain cells in a preosteoblast phenotype. Two transcript variants encoding the same protein have been found for this gene. [provided by RefSeq, Dec 2012]

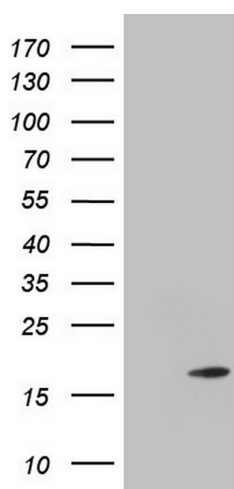


[View online »](#)

Synonyms: AMS; BBRSAY; bHLHa39; DERMO1; FFDD3; SETLSS

Protein Families: Druggable Genome, Transcription Factors

Product images:



HEK293T cells were transfected with the pCMV6-ENTRY control (Cat# [PS100001], Left lane) or pCMV6-ENTRY TWIST2 (Cat# [RC205006], Right lane) cDNA for 48 hrs and lysed. Equivalent amounts of cell lysates (5 ug per lane) were separated by SDS-PAGE and immunoblotted with anti-TWIST2 (Cat# TA805212). Positive lysates [LY403298] (100ug) and [LC403298] (20ug) can be purchased separately from OriGene.