

## Product datasheet for **TA805210S**

### TFPI2 Mouse Monoclonal Antibody [Clone ID: OTI1F2]

#### Product data:

Product Type:	Primary Antibodies
Clone Name:	OTI1F2
Applications:	WB
Recommended Dilution:	WB 1:2000
Reactivity:	Human
Host:	Mouse
Isotype:	IgG1
Clonality:	Monoclonal
Immunogen:	Human recombinant protein fragment corresponding to amino acids 23-235 of human TFPI2 (NP_006519) produced in E.coli.
Formulation:	PBS (pH 7.3) containing 1% BSA, 50% glycerol and 0.02% sodium azide.
Concentration:	1 mg/ml
Purification:	Purified from mouse ascites fluids or tissue culture supernatant by affinity chromatography (protein A/G)
Conjugation:	Unconjugated
Storage:	Store at -20°C as received.
Stability:	Stable for 12 months from date of receipt.
Predicted Protein Size:	27.4 kDa
Gene Name:	tissue factor pathway inhibitor 2
Database Link:	<a href="#">NP_006519</a> <a href="#">Entrez Gene 7980 Human</a> <a href="#">P48307</a>
Background:	This gene encodes a member of the Kunitz-type serine proteinase inhibitor family. The protein can inhibit a variety of serine proteases including factor VIIa/tissue factor, factor Xa, plasmin, trypsin, chymotrypsin and plasma kallikrein. This gene has been identified as a tumor suppressor gene in several types of cancer. Alternative splicing results in multiple transcript variants. [provided by RefSeq, Aug 2012]

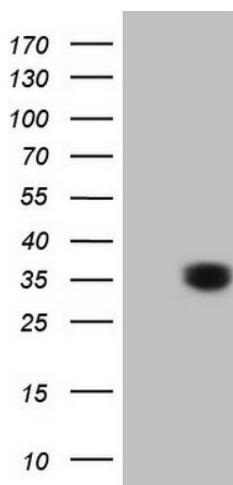


[View online »](#)

Synonyms: PP5; REF1; TFPI-2

Protein Families: Secreted Protein

### Product images:



HEK293T cells were transfected with the pCMV6-ENTRY control (Left lane) or pCMV6-ENTRY TFPI2 ([RC202760], Right lane) cDNA for 48 hrs and lysed. Equivalent amounts of cell lysates (5 ug per lane) were separated by SDS-PAGE and immunoblotted with anti-TFPI2. Positive lysates [LY416564] (100ug) and [LC416564] (20ug) can be purchased separately from OriGene.