

## Product datasheet for TA805203

### MRTFA Mouse Monoclonal Antibody [Clone ID: OTI2G6]

#### Product data:

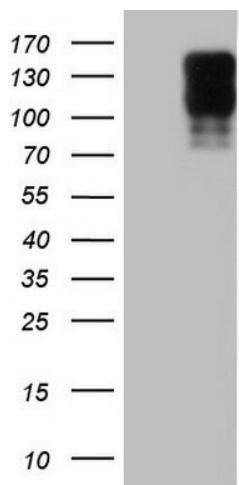
Product Type:	Primary Antibodies
Clone Name:	OTI2G6
Applications:	WB
Recommended Dilution:	WB 1:2000
Reactivity:	Human
Host:	Mouse
Isotype:	IgG1
Clonality:	Monoclonal
Immunogen:	Human recombinant protein fragment corresponding to amino acids 165-397 of human MKL1 (NP_065882) produced in E.coli.
Formulation:	PBS (pH 7.3) containing 1% BSA, 50% glycerol and 0.02% sodium azide.
Concentration:	1 mg/ml
Purification:	Purified from mouse ascites fluids or tissue culture supernatant by affinity chromatography (protein A/G)
Conjugation:	Unconjugated
Storage:	Store at -20°C as received.
Stability:	Stable for 12 months from date of receipt.
Gene Name:	megakaryoblastic leukemia (translocation) 1
Database Link:	<a href="#">NP_065882</a> <a href="#">Entrez Gene 57591 Human</a> <a href="#">Q969V6</a>
Background:	The protein encoded by this gene interacts with the transcription factor myocardin, a key regulator of smooth muscle cell differentiation. The encoded protein is predominantly nuclear and may help transduce signals from the cytoskeleton to the nucleus. This gene is involved in a specific translocation event that creates a fusion of this gene and the RNA-binding motif protein-15 gene. This translocation has been associated with acute megakaryocytic leukemia. Alternative splicing results in multiple transcript variants. [provided by RefSeq, Sep 2013]


[View online »](#)

**Synonyms:** BSAC; MAL; MRTF-A

**Protein Families:** Transcription Factors

**Product images:**



HEK293T cells were transfected with the pCMV6-ENTRY control (Left lane) or pCMV6-ENTRY MKL1 ([RC221212], Right lane) cDNA for 48 hrs and lysed. Equivalent amounts of cell lysates (5 ug per lane) were separated by SDS-PAGE and immunoblotted with anti-MKL1.