

Product datasheet for **TA805187BM**

Thyroid Hormone Receptor alpha (THRA) Mouse Monoclonal Antibody (HRP conjugated) [Clone ID: OTI2A2]

Product data:

Product Type:	Primary Antibodies
Clone Name:	OTI2A2
Applications:	IHC, WB
Recommended Dilution:	WB 1:2000, IHC 1:150
Reactivity:	Human, Mouse, Rat
Host:	Mouse
Isotype:	IgG1
Clonality:	Monoclonal
Immunogen:	Human recombinant protein fragment corresponding to amino acids 1-220 of human THRA (NP_955366) produced in E.coli.
Formulation:	PBS (pH 7.3) containing 1% BSA, 50% glycerol.
Concentration:	0.5 mg/ml
Purification:	Purified from mouse ascites fluids or tissue culture supernatant by affinity chromatography (protein A/G)
Conjugation:	HRP
Storage:	Store at -20°C as received.
Stability:	Stable for 12 months from date of receipt.
Gene Name:	thyroid hormone receptor, alpha
Database Link:	NP_955366 Entrez Gene 21833 Mouse Entrez Gene 81812 Rat Entrez Gene 7067 Human P10827
Background:	The protein encoded by this gene is a nuclear hormone receptor for triiodothyronine. It is one of the several receptors for thyroid hormone, and has been shown to mediate the biological activities of thyroid hormone. Knockout studies in mice suggest that the different receptors, while having certain extent of redundancy, may mediate different functions of thyroid hormone. Alternatively spliced transcript variants encoding distinct isoforms have been reported. [provided by RefSeq, Jul 2008]



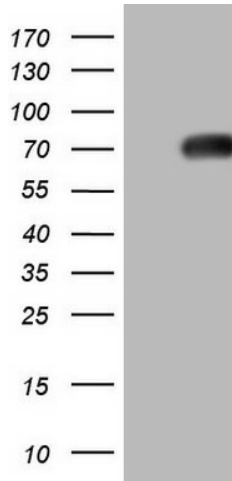
[View online »](#)

Synonyms: AR7; c-ERBA-1; CHNG6; EAR7; ERB-T-1; ERBA; ERBA1; NR1A1; THRA1; THRA2; TRalpha

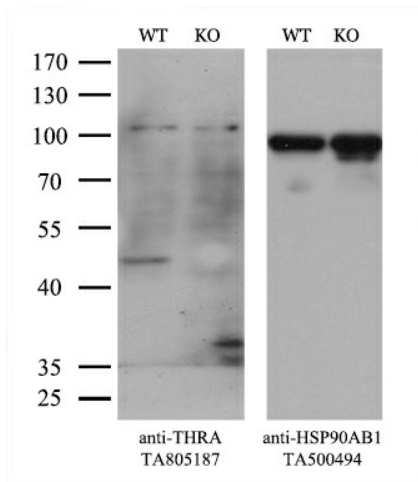
Protein Families: Druggable Genome, Nuclear Hormone Receptor, Transcription Factors

Protein Pathways: Neuroactive ligand-receptor interaction

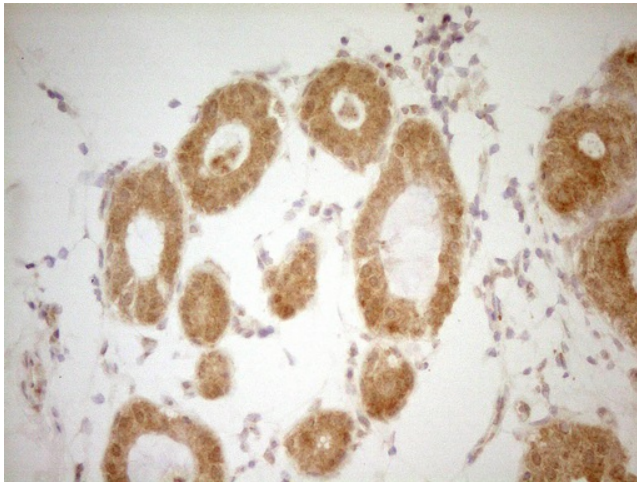
Product images:



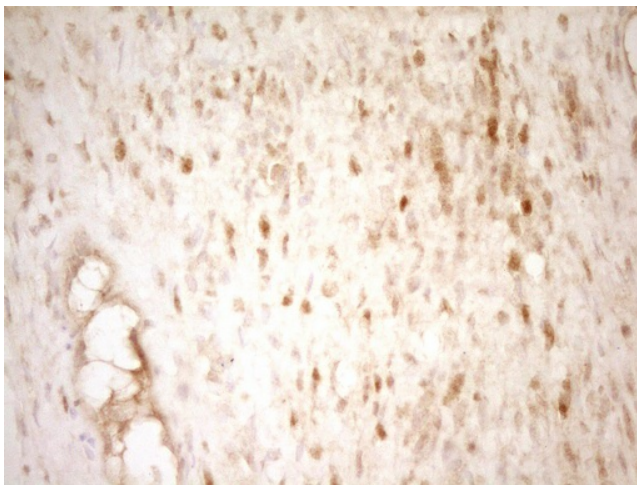
HEK293T cells were transfected with the pCMV6-ENTRY control (Cat# [PS100001], Left lane) or pCMV6-ENTRY THRA (Cat# [RC203210], Right lane) cDNA for 48 hrs and lysed. Equivalent amounts of cell lysates (5 ug per lane) were separated by SDS-PAGE and immunoblotted with anti-THRA(Cat# [TA805187]).



Equivalent amounts of cell lysates (10 ug per lane) of wild-type HeLa cells (WT, Cat# LC810HELA) and THRA-Knockout HeLa cells (KO, Cat# [LC810239]) were separated by SDS-PAGE and immunoblotted with anti-THRA monoclonal antibody [TA805187]. Then the blotted membrane was stripped and reprobed with anti-HSP90AB1 antibody ([TA500494]) as a loading control (1:500).



Immunohistochemical staining of paraffin-embedded Adenocarcinoma of Human breast tissue using anti-THRA mouse monoclonal antibody. (Heat-induced epitope retrieval by 1mM EDTA in 10mM Tris, pH8.5, 120°C for 3min, [TA805187])



Immunohistochemical staining of paraffin-embedded Human Ovary tissue within the normal limits using anti-THRA mouse monoclonal antibody. (Heat-induced epitope retrieval by 1mM EDTA in 10mM Tris, pH8.5, 120°C for 3min, [TA805187])