

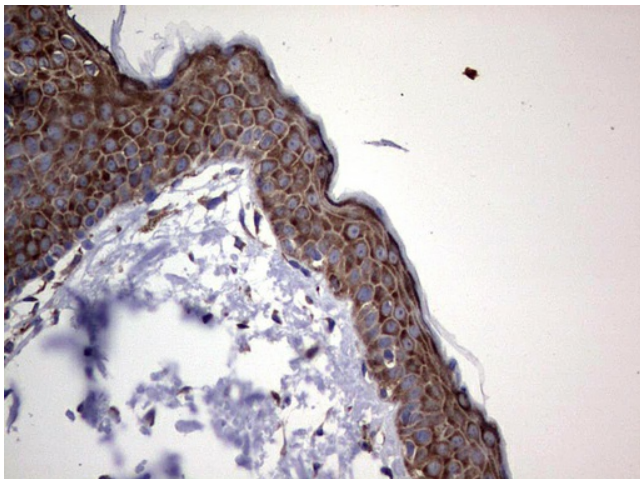
Product datasheet for **TA805184**

TMEM16A (ANO1) Mouse Monoclonal Antibody [Clone ID: OTI1C8]

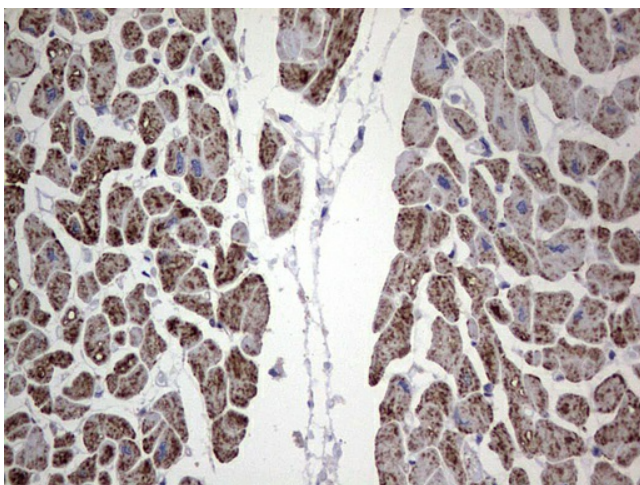
Product data:

Product Type:	Primary Antibodies
Clone Name:	OTI1C8
Applications:	IHC
Recommended Dilution:	IHC 1:150
Reactivity:	Human, Mouse, Rat
Host:	Mouse
Isotype:	IgG1
Clonality:	Monoclonal
Immunogen:	Human recombinant protein fragment corresponding to amino acids 1-333 of human ANO1 (NP_060513) produced in E.coli.
Formulation:	PBS (pH 7.3) containing 1% BSA, 50% glycerol and 0.02% sodium azide.
Concentration:	1 mg/ml
Purification:	Purified from mouse ascites fluids or tissue culture supernatant by affinity chromatography (protein A/G)
Conjugation:	Unconjugated
Storage:	Store at -20°C as received.
Stability:	Stable for 12 months from date of receipt.
Gene Name:	anoctamin 1
Database Link:	NP_060513 Entrez Gene 101772 Mouse Entrez Gene 309135 Rat Entrez Gene 55107 Human Q5XXA6
Synonyms:	DOG1; ORAOV2; TAOS2; TMEM16A
Protein Families:	Transmembrane

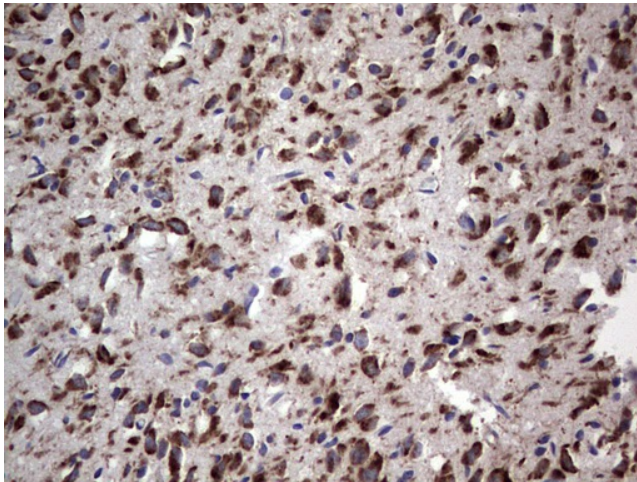

[View online »](#)

Product images:


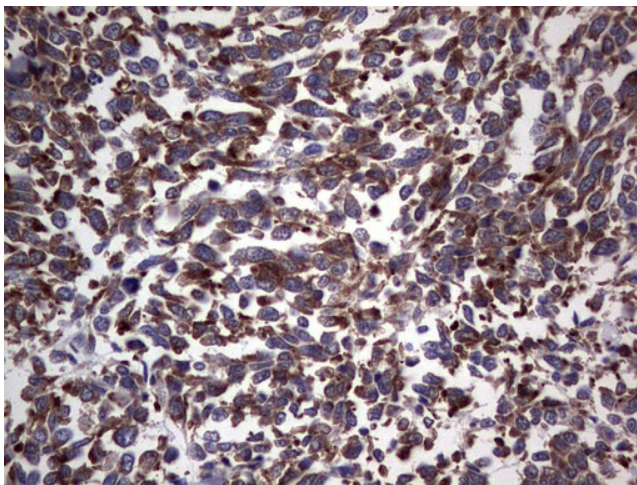
Immunohistochemical staining of paraffin-embedded Human skin tissue using anti-ANO1 mouse monoclonal antibody. Heat-induced epitope retrieval by EDTA solution buffer pH 8.0 at 120°C for 3 min.



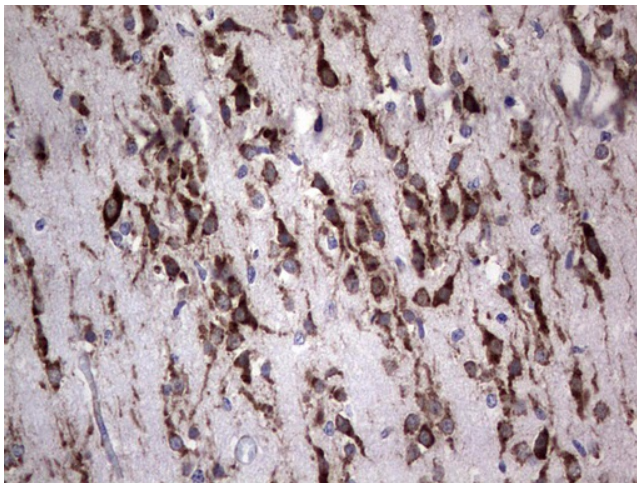
Immunohistochemical staining of paraffin-embedded Human adult heart tissue using anti-ANO1 mouse monoclonal antibody. Heat-induced epitope retrieval by EDTA solution buffer pH 8.0 at 120°C for 3 min.



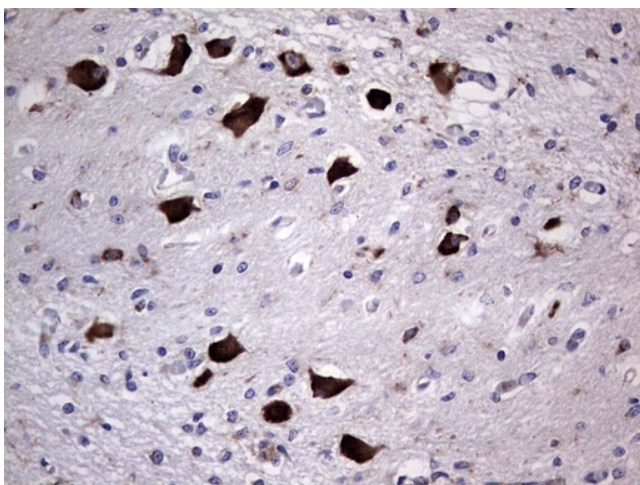
Immunohistochemical staining of paraffin-embedded Human adult brain tissue using anti-ANO1 mouse monoclonal antibody. Heat-induced epitope retrieval by EDTA solution buffer pH 8.0 at 120°C for 3 min.



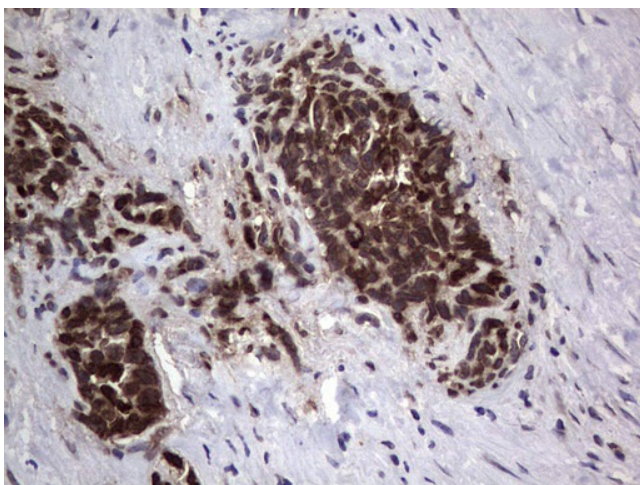
Immunohistochemical staining of paraffin-embedded Human melanoma tissue using anti-ANO1 mouse monoclonal antibody. Heat-induced epitope retrieval by EDTA solution buffer pH 8.0 at 120°C for 3 min.



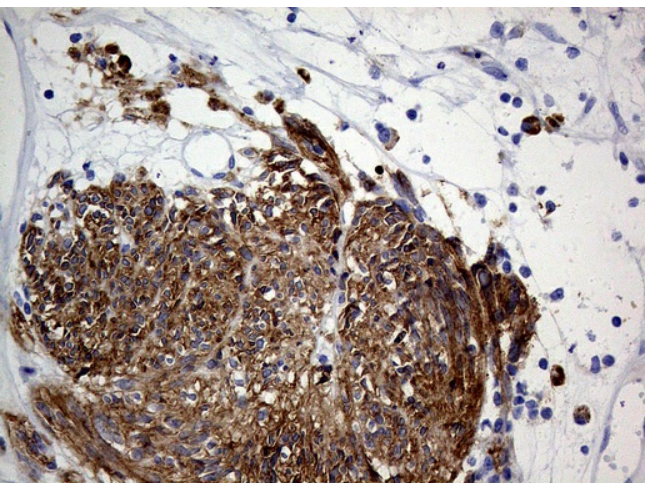
Immunohistochemical staining of paraffin-embedded Human embryonic brain cortex tissue using anti-ANO1 mouse monoclonal antibody. Heat-induced epitope retrieval by EDTA solution buffer pH 8.0 at 120°C for 3 min.



Immunohistochemical staining of paraffin-embedded Human embryonic cerebellum using anti-ANO1 mouse monoclonal antibody. Heat-induced epitope retrieval by EDTA solution buffer pH 8.0 at 120°C for 3 min.



Immunohistochemical staining of paraffin-embedded Human testicular cancer tissue using anti-ANO1 mouse monoclonal antibody. Heat-induced epitope retrieval by EDTA solution buffer pH 8.0 at 120°C for 3 min.



Immunohistochemical staining of paraffin-embedded Human gastric stromal tumor tissue using anti-ANO1 mouse monoclonal antibody. Heat-induced epitope retrieval by EDTA solution buffer pH 8.0 at 120°C for 3 min.