

## Product datasheet for **TA805171S**

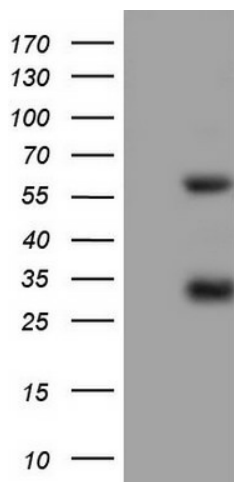
### Mesothelin (MSLN) Mouse Monoclonal Antibody [Clone ID: OTI5B12]

#### Product data:

|                         |                                                                                                                       |
|-------------------------|-----------------------------------------------------------------------------------------------------------------------|
| Product Type:           | Primary Antibodies                                                                                                    |
| Clone Name:             | OTI5B12                                                                                                               |
| Applications:           | WB                                                                                                                    |
| Recommended Dilution:   | WB 1:2000                                                                                                             |
| Reactivity:             | Human                                                                                                                 |
| Host:                   | Mouse                                                                                                                 |
| Isotype:                | IgG1                                                                                                                  |
| Clonality:              | Monoclonal                                                                                                            |
| Immunogen:              | Human recombinant protein fragment corresponding to amino acids 270-493 of human MSLN (NP_005814) produced in E.coli. |
| Formulation:            | PBS (pH 7.3) containing 1% BSA, 50% glycerol and 0.02% sodium azide.                                                  |
| Concentration:          | 1 mg/ml                                                                                                               |
| Purification:           | Purified from mouse ascites fluids or tissue culture supernatant by affinity chromatography (protein A/G)             |
| Conjugation:            | Unconjugated                                                                                                          |
| Storage:                | Store at -20°C as received.                                                                                           |
| Stability:              | Stable for 12 months from date of receipt.                                                                            |
| Predicted Protein Size: | 62.7 kDa                                                                                                              |
| Gene Name:              | mesothelin                                                                                                            |
| Database Link:          | <a href="#">NP_005814</a><br><a href="#">Entrez Gene 10232 Human</a><br><a href="#">Q13421</a>                        |
| Synonyms:               | MPF; SMRP                                                                                                             |
| Protein Families:       | Druggable Genome, Secreted Protein, Transmembrane                                                                     |



[View online »](#)

**Product images:**

HEK293T cells were transfected with the pCMV6-ENTRY control (Left lane) or pCMV6-ENTRY MSLN ([RC202532], Right lane) cDNA for 48 hrs and lysed. Equivalent amounts of cell lysates (5 ug per lane) were separated by SDS-PAGE and immunoblotted with anti-MSLN. Positive lysates [LY401768] (100ug) and [LC401768] (20ug) can be purchased separately from OriGene.