

## Product datasheet for **TA805131M**

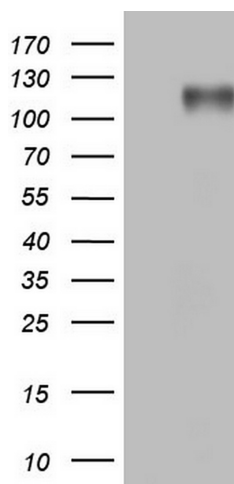
### MRTFA Mouse Monoclonal Antibody [Clone ID: OTI2B9]

#### Product data:

Product Type:	Primary Antibodies
Clone Name:	OTI2B9
Applications:	WB
Recommended Dilution:	WB 1:2000
Reactivity:	Human
Host:	Mouse
Isotype:	IgG1
Clonality:	Monoclonal
Immunogen:	Human recombinant protein fragment corresponding to amino acids 165-397 of human MKL1 (NP_065882) produced in E.coli.
Formulation:	PBS (pH 7.3) containing 1% BSA, 50% glycerol and 0.02% sodium azide.
Concentration:	1 mg/ml
Purification:	Purified from mouse ascites fluids or tissue culture supernatant by affinity chromatography (protein A/G)
Conjugation:	Unconjugated
Storage:	Store at -20°C as received.
Stability:	Stable for 12 months from date of receipt.
Gene Name:	megakaryoblastic leukemia (translocation) 1
Database Link:	<a href="#">NP_065882</a> <a href="#">Entrez Gene 57591 Human</a> <a href="#">Q969V6</a>
Synonyms:	BSAC; MAL; MRTF-A
Protein Families:	Transcription Factors

[View online »](#)

## Product images:



HEK293T cells were transfected with the pCMV6-ENTRY control (Left lane) or pCMV6-ENTRY MKL1 ([RC221212], Right lane) cDNA for 48 hrs and lysed. Equivalent amounts of cell lysates (5 ug per lane) were separated by SDS-PAGE and immunoblotted with anti-MKL1.