

Product datasheet for **TA805083M**

Apolipoprotein E (APOE) Mouse Monoclonal Antibody [Clone ID: OTI1D6]

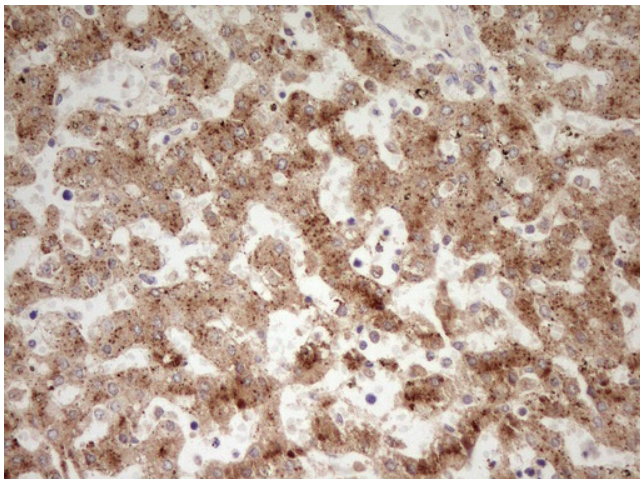
Product data:

Product Type:	Primary Antibodies
Clone Name:	OTI1D6
Applications:	IHC
Recommended Dilution:	IHC 1:150
Reactivity:	Human
Host:	Mouse
Isotype:	IgG1
Clonality:	Monoclonal
Immunogen:	Full length human recombinant protein of human APOE (NP_000032) produced in HEK293T cell.
Formulation:	PBS (pH 7.3) containing 1% BSA, 50% glycerol and 0.02% sodium azide.
Concentration:	1 mg/ml
Purification:	Purified from mouse ascites fluids or tissue culture supernatant by affinity chromatography (protein A/G)
Conjugation:	Unconjugated
Storage:	Store at -20°C as received.
Stability:	Stable for 12 months from date of receipt.
Predicted Protein Size:	34.2 kDa
Gene Name:	apolipoprotein E
Database Link:	NP_000032 Entrez Gene 348 Human P02649
Synonyms:	AD2; APO-E; LDLCQ5; LPG
Protein Families:	Adult stem cells, Druggable Genome, Secreted Protein, Stem cell - Pluripotency
Protein Pathways:	Alzheimer's disease

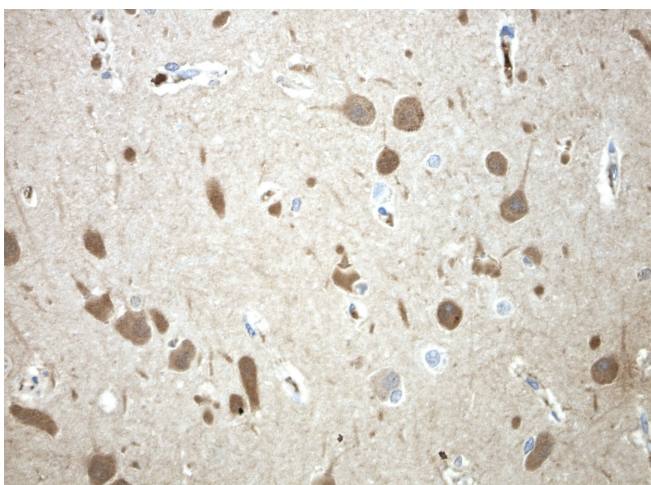


[View online »](#)

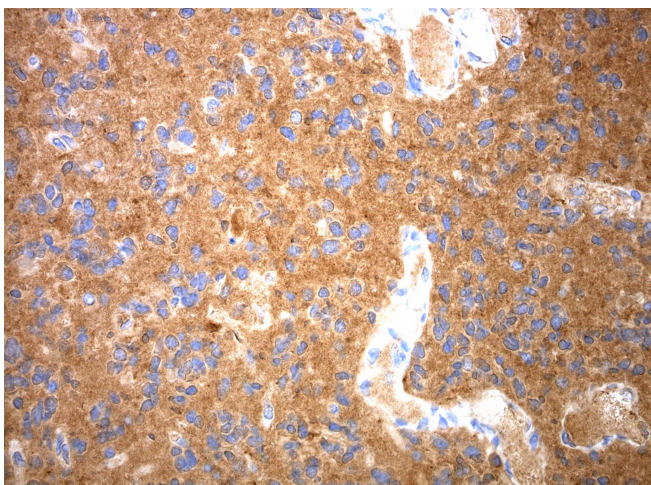
Product images:



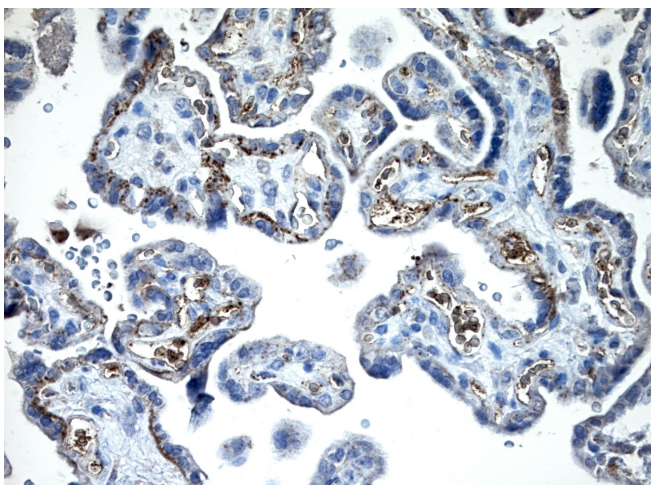
Immunohistochemical staining of paraffin-embedded Human embryonic liver tissue using anti-APOE mouse monoclonal antibody. Heat-induced epitope retrieval by EDTA solution buffer pH 8.0 at 120°C for 3 min.



Immunohistochemical staining of paraffin-embedded normal brain using APOE antibody [TA805083] clone OTI1D6 mouse monoclonal antibody. Protocol used HIER TEE pH9.0 (cat# [B21-100]) and anti-APOE at 1:150 dilution. Detection was done with Polink1 Broad Mouse and Rabbit C/N [D11-18] with DAB Kit. Image 40x magnification.



Immunohistochemical staining of paraffin-embedded glioma using APOE antibody [TA805083] clone OT11D6 mouse monoclonal antibody. Protocol used HIER TEE pH9.0 (cat# [B21-100]) and anti-APOE at 1:150 dilution. Detection was done with Polink1 Broad Mouse and Rabbit C/N [D11-18] with DAB Kit. Image 40x magnification.



Immunohistochemical staining of paraffin-embedded placenta using APOE antibody [TA805083] clone OT11D6 mouse monoclonal antibody. Protocol used HIER TEE pH9.0 (cat# [B21-100]) and anti-APOE at 1:150 dilution. Detection was done with Polink1 Broad Mouse and Rabbit C/N [D11-18] with DAB Kit. Image 40x magnification.