

## Product datasheet for **TA805083AM**

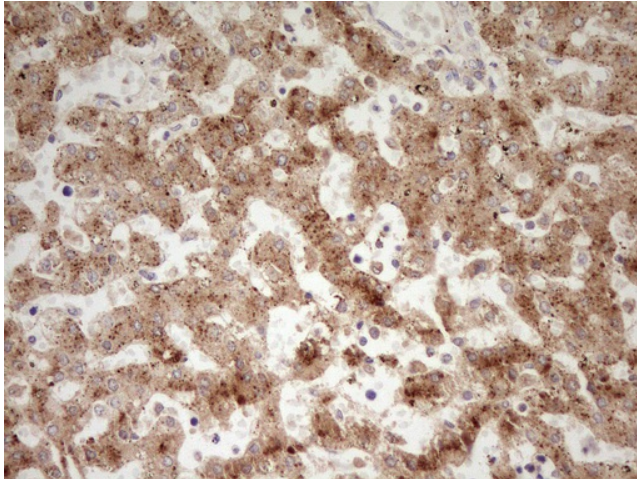
### Apolipoprotein E (APOE) Mouse Monoclonal Antibody (Biotin conjugated) [Clone ID: OT11D6]

#### Product data:

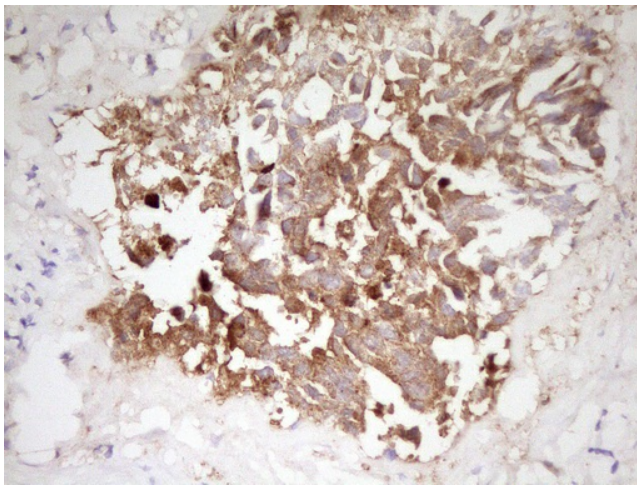
Product Type:	Primary Antibodies
Clone Name:	OT11D6
Applications:	IHC
Recommended Dilution:	IHC 1:150
Reactivity:	Human
Host:	Mouse
Isotype:	IgG1
Clonality:	Monoclonal
Immunogen:	Full length human recombinant protein of human APOE (NP_000032) produced in HEK293T cell.
Formulation:	PBS (pH 7.3) containing 1% BSA, 50% glycerol and 0.02% sodium azide.
Concentration:	0.5 mg/ml
Purification:	Purified from mouse ascites fluids or tissue culture supernatant by affinity chromatography (protein A/G)
Conjugation:	Biotin
Storage:	Store at -20°C as received.
Stability:	Stable for 12 months from date of receipt.
Predicted Protein Size:	34.2 kDa
Gene Name:	apolipoprotein E
Database Link:	<a href="#">NP_000032</a> <a href="#">Entrez Gene 348 Human</a> <a href="#">P02649</a>
Synonyms:	AD2; APO-E; LDLCQ5; LPG
Protein Families:	Adult stem cells, Druggable Genome, Secreted Protein, Stem cell - Pluripotency
Protein Pathways:	Alzheimer's disease



[View online »](#)

**Product images:**

Immunohistochemical staining of paraffin-embedded Human embryonic liver tissue using anti-APOE mouse monoclonal antibody. (Heat-induced epitope retrieval by 1mM EDTA in 10mM Tris, pH8.5, 120°C for 3min, [TA805083])



Immunohistochemical staining of paraffin-embedded Human testicular cancer tissue using anti-APOE mouse monoclonal antibody. (Heat-induced epitope retrieval by 1mM EDTA in 10mM Tris, pH8.5, 120°C for 3min, [TA805083])