

## Product datasheet for **TA805066S**

### MLH1 Mouse Monoclonal Antibody [Clone ID: OTI1C1]

#### Product data:

Product Type:	Primary Antibodies
Clone Name:	OTI1C1
Applications:	IHC
Recommended Dilution:	IHC 1:150
Reactivity:	Human, Mouse, Rat
Host:	Mouse
Isotype:	IgG1
Clonality:	Monoclonal
Immunogen:	Human recombinant protein fragment corresponding to amino acids 299-527 of human MLH1(NP_000240) produced in E.coli.
Formulation:	PBS (pH 7.3) containing 1% BSA, 50% glycerol and 0.02% sodium azide.
Concentration:	1 mg/ml
Purification:	Purified from mouse ascites fluids or tissue culture supernatant by affinity chromatography (protein A/G)
Conjugation:	Unconjugated
Storage:	Store at -20°C as received.
Stability:	Stable for 12 months from date of receipt.
Predicted Protein Size:	84.4 kDa
Gene Name:	mutL homolog 1
Database Link:	<a href="#">NP_000240</a> <a href="#">Entrez Gene 17350 Mouse</a> <a href="#">Entrez Gene 81685 Rat</a> <a href="#">Entrez Gene 4292 Human</a> <a href="#">P40692</a>
Background:	This gene was identified as a locus frequently mutated in hereditary nonpolyposis colon cancer (HNPCC). It is a human homolog of the E. coli DNA mismatch repair gene mutL, consistent with the characteristic alterations in microsatellite sequences (RER+phenotype) found in HNPCC. Alternative splicing results in multiple transcript variants encoding distinct isoforms. Additional transcript variants have been described, but their full-length natures have not been determined. [provided by RefSeq, Nov 2009]

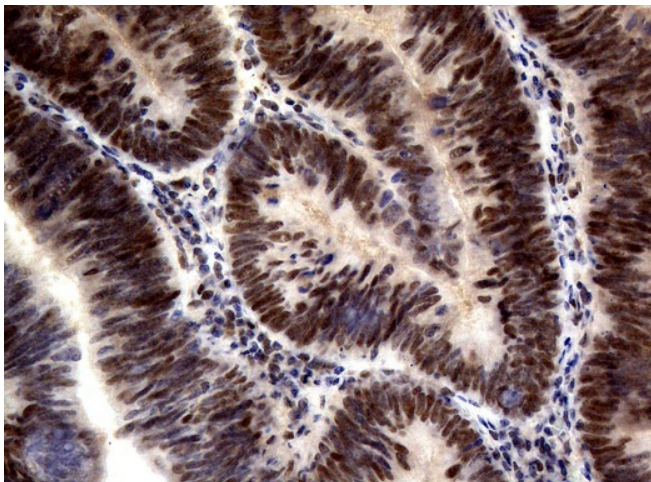


[View online »](#)

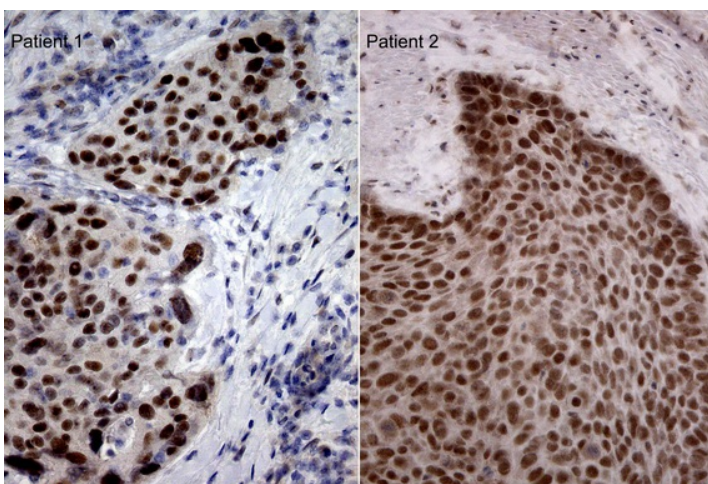
**Synonyms:** COCA2; FCC2; hMLH1; HNPCC; HNPCC2; MMRCS1

**Protein Families:** Druggable Genome

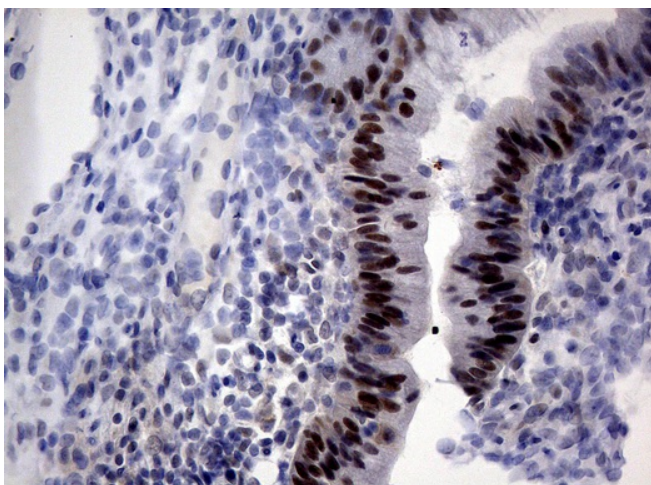
**Protein Pathways:** Colorectal cancer, Endometrial cancer, Mismatch repair, Pathways in cancer

**Product images:**

Immunohistochemical staining of paraffin-embedded Adenocarcinoma of Human colon tissue using anti-MLH1 mouse monoclonal antibody. (Heat-induced epitope retrieval by 1mM EDTA in 10mM Tris buffer (pH9.0) at 120°C for 3min, [TA805066]) (1:300)



Immunohistochemical staining of paraffin-embedded Carcinoma of Human Esophagus using anti-MLH1 mouse monoclonal antibody. (Heat-induced epitope retrieval by 1mM EDTA in 10mM Tris buffer (pH9.0) at 120°C for 3min, [TA805066]) (1:300)



Immunohistochemical staining of paraffin-embedded Human Gastric Carcinoma using anti-MLH1 mouse monoclonal antibody. (Heat-induced epitope retrieval by 1mM EDTA in 10mM Tris buffer (pH9.0) at 120°C for 3min, [TA805066]) (1:300)