

Product datasheet for **TA805062BM**

MLH1 Mouse Monoclonal Antibody (HRP conjugated) [Clone ID: OTI1B9]

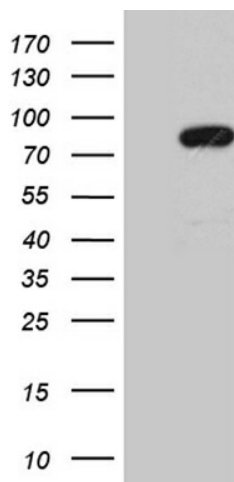
Product data:

Product Type:	Primary Antibodies
Clone Name:	OTI1B9
Applications:	WB
Recommended Dilution:	WB 1:500~2000
Reactivity:	Human, Mouse, Rat
Host:	Mouse
Isotype:	IgG1
Clonality:	Monoclonal
Immunogen:	Human recombinant protein fragment corresponding to amino acids 299-527 of human MLH1(NP_000240) produced in E.coli.
Formulation:	PBS (pH 7.3) containing 1% BSA, 50% glycerol.
Concentration:	0.5 mg/ml
Purification:	Purified from mouse ascites fluids or tissue culture supernatant by affinity chromatography (protein A/G)
Conjugation:	HRP
Storage:	Store at -20°C as received.
Stability:	Stable for 12 months from date of receipt.
Predicted Protein Size:	84.4 kDa
Gene Name:	mutL homolog 1
Database Link:	NP_000240 Entrez Gene 17350 Mouse Entrez Gene 81685 Rat Entrez Gene 4292 Human P40692
Synonyms:	COCA2; FCC2; hMLH1; HNPCC; HNPCC2; MMRCS1
Protein Families:	Druggable Genome
Protein Pathways:	Colorectal cancer, Endometrial cancer, Mismatch repair, Pathways in cancer

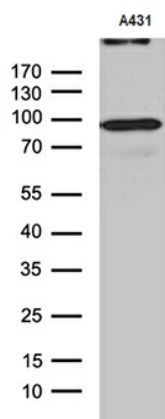


[View online »](#)

Product images:



HEK293T cells were transfected with the pCMV6-ENTRY control (Left lane) or pCMV6-ENTRY MLH1 ([RC201607], Right lane) cDNA for 48 hrs and lysed. Equivalent amounts of cell lysates (5 ug per lane) were separated by SDS-PAGE and immunoblotted with anti-MLH1 (1:2000). Positive lysates [LY400096] (100ug) and [LC400096] (20ug) can be purchased separately from OriGene.



Western blot analysis of extracts (35ug) from A431 cell line by using anti-MLH1 monoclonal antibody (1:500).