

Product datasheet for **TA805049S**

LXR alpha (NR1H3) Mouse Monoclonal Antibody [Clone ID: OTI1F5]

Product data:

Product Type:	Primary Antibodies
Clone Name:	OTI1F5
Applications:	WB
Recommended Dilution:	WB 1:2000
Reactivity:	Human, Mouse, Rat
Host:	Mouse
Isotype:	IgG2b
Clonality:	Monoclonal
Immunogen:	Human recombinant protein fragment corresponding to amino acids 69-329 of human NR1H3 (NP_005684) produced in E.coli.
Formulation:	PBS (pH 7.3) containing 1% BSA, 50% glycerol and 0.02% sodium azide.
Concentration:	1 mg/ml
Purification:	Purified from mouse ascites fluids or tissue culture supernatant by affinity chromatography (protein A/G)
Conjugation:	Unconjugated
Storage:	Store at -20°C as received.
Stability:	Stable for 12 months from date of receipt.
Predicted Protein Size:	50.2 kDa
Gene Name:	nuclear receptor subfamily 1 group H member 3
Database Link:	NP_005684 Entrez Gene 22259 Mouse Entrez Gene 58852 Rat Entrez Gene 10062 Human Q13133



[View online »](#)

Background:

The protein encoded by this gene belongs to the NR1 subfamily of the nuclear receptor superfamily. The NR1 family members are key regulators of macrophage function, controlling transcriptional programs involved in lipid homeostasis and inflammation. This protein is highly expressed in visceral organs, including liver, kidney and intestine. It forms a heterodimer with retinoid X receptor (RXR), and regulates expression of target genes containing retinoid response elements. Studies in mice lacking this gene suggest that it may play an important role in the regulation of cholesterol homeostasis. Alternatively spliced transcript variants encoding different isoforms have been found for this gene. [provided by RefSeq, Oct 2011]

Synonyms:

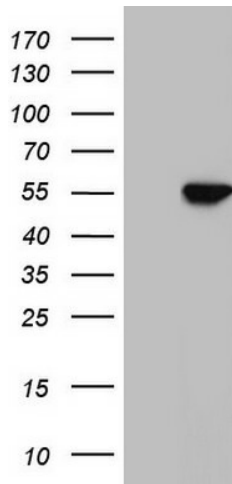
LXR-a; LXRA; RLD-1

Protein Families:

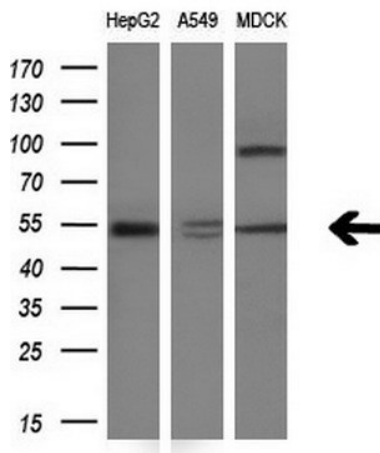
Druggable Genome, Nuclear Hormone Receptor, Transcription Factors

Protein Pathways:

PPAR signaling pathway

Product images:


HEK293T cells were transfected with the pCMV6-ENTRY control (Left lane) or pCMV6-ENTRY NR1H3 ([RC223767], Right lane) cDNA for 48 hrs and lysed. Equivalent amounts of cell lysates (5 ug per lane) were separated by SDS-PAGE and immunoblotted with anti-NR1H3. Positive lysates [LY401738] (100ug) and [LC401738] (20ug) can be purchased separately from OriGene.



Western blot analysis of extracts (10ug) from 3 different cell lines by using anti-NR1H3 monoclonal antibody (1:200).