

Product datasheet for **TA805037BM**

Lipin 3 (LPIN3) Mouse Monoclonal Antibody (HRP conjugated) [Clone ID: OTI1B10]

Product data:

Product Type:	Primary Antibodies
Clone Name:	OTI1B10
Applications:	WB
Recommended Dilution:	WB 1:2000
Reactivity:	Human
Host:	Mouse
Isotype:	IgG2b
Clonality:	Monoclonal
Immunogen:	Full length human recombinant protein of human LPIN3 (NP_075047) produced in HEK293T cell.
Formulation:	PBS (pH 7.3) containing 1% BSA, 50% glycerol.
Concentration:	0.5 mg/ml
Purification:	Purified from mouse ascites fluids or tissue culture supernatant by affinity chromatography (protein A/G)
Conjugation:	HRP
Storage:	Store at -20°C as received.
Stability:	Stable for 12 months from date of receipt.
Predicted Protein Size:	93.4 kDa
Gene Name:	lipin 3
Database Link:	NP_075047 Entrez Gene 64900 Human Q9BQK8



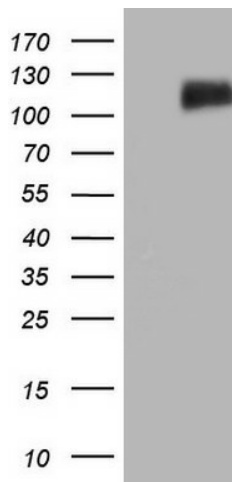
[View online »](#)

Background:

Humans lipodystrophy is characterized by loss of body fat, fatty liver, hypertriglyceridemia, and insulin resistance. Mice carrying mutations in the fatty liver dystrophy (fld) gene have similar phenotypes. Through positional cloning, the mouse gene responsible for fatty liver dystrophy was isolated and designated Lpin1. The nuclear protein encoded by Lpin1 was named lipin. Lpin1 mRNA was expressed at high levels in adipose tissue and was induced during differentiation of preadipocytes. These results indicated that lipin is required for normal adipose tissue development and provided a candidate gene for human lipodystrophy. Through database searches, mouse and human EST and genomic sequences with similarities to Lpin1 were identified. These included two related mouse genes (Lpin2 and Lpin3) and three human homologs (LPIN1, LPIN2, and LPIN3). Human LPIN1 gene has been mapped to 2p25.; linkages of fat mass and serum leptin levels to this same region have been noted. Human LPIN2 and LPIN3 mapped to chromosomes 18p11 and 20q11-q12, respectively. The mouse genes encoding Lpin1, Lpin2, and Lpin3 mapped to chromosome 12, 17, and 2, respectively. [provided by RefSeq, Jul 2008]

Synonyms:

LIPN3L; SMP2

Product images:

HEK293T cells were transfected with the pCMV6-ENTRY control (Left lane) or pCMV6-ENTRY LPIN3 ([RC215286], Right lane) cDNA for 48 hrs and lysed. Equivalent amounts of cell lysates (5 ug per lane) were separated by SDS-PAGE and immunoblotted with anti-LPIN3. Positive lysates [LY411469] (100ug) and [LC411469] (20ug) can be purchased separately from OriGene.