

Product datasheet for **TA804952AM**

CD56 (NCAM1) Mouse Monoclonal Antibody (Biotin conjugated) [Clone ID: OTI1C7]

Product data:

Product Type:	Primary Antibodies
Clone Name:	OTI1C7
Applications:	IHC, WB
Recommended Dilution:	WB 1:2000, IHC 1:150
Reactivity:	Human, Mouse, Rat
Host:	Mouse
Isotype:	IgG2a
Clonality:	Monoclonal
Immunogen:	Human recombinant protein fragment corresponding to amino acids 20-718 of human NCAM1 (NP_851996) produced in HEK293T cell.
Formulation:	PBS (pH 7.3) containing 1% BSA, 50% glycerol and 0.02% sodium azide.
Concentration:	0.5 mg/ml
Purification:	Purified from mouse ascites fluids or tissue culture supernatant by affinity chromatography (protein A/G)
Conjugation:	Biotin
Storage:	Store at -20°C as received.
Stability:	Stable for 12 months from date of receipt.
Predicted Protein Size:	94.4 kDa
Gene Name:	neural cell adhesion molecule 1
Database Link:	NP_851996 Entrez Gene 17967 Mouse Entrez Gene 24586 Rat Entrez Gene 4684 Human P13591
Background:	This gene encodes a cell adhesion protein which is a member of the immunoglobulin superfamily. The encoded protein is involved in cell-to-cell interactions as well as cell-matrix interactions during development and differentiation. The encoded protein has been shown to be involved in development of the nervous system, and for cells involved in the expansion of T cells and dendritic cells which play an important role in immune surveillance. Alternative splicing results in multiple transcript variants. [provided by RefSeq, Jun 2011]



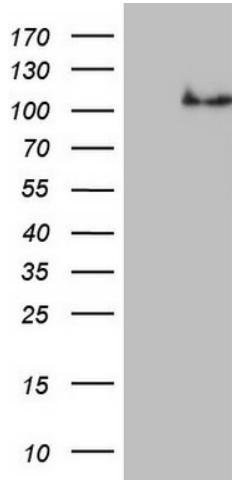
[View online »](#)

Synonyms: CD56; MSK39; NCAM

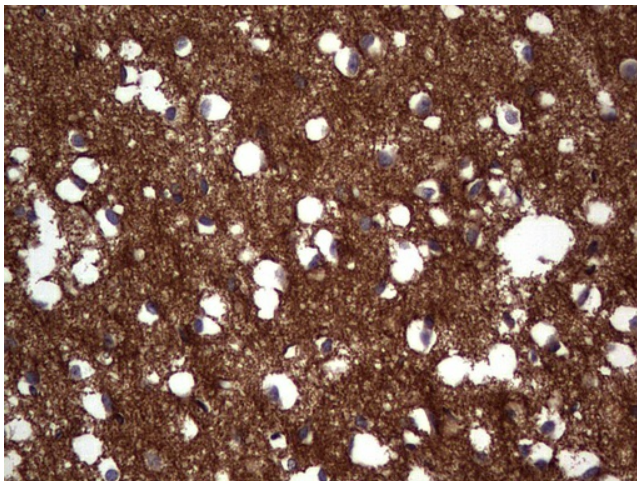
Protein Families: Druggable Genome, ES Cell Differentiation/IPS, Transmembrane

Protein Pathways: Cell adhesion molecules (CAMs), Prion diseases

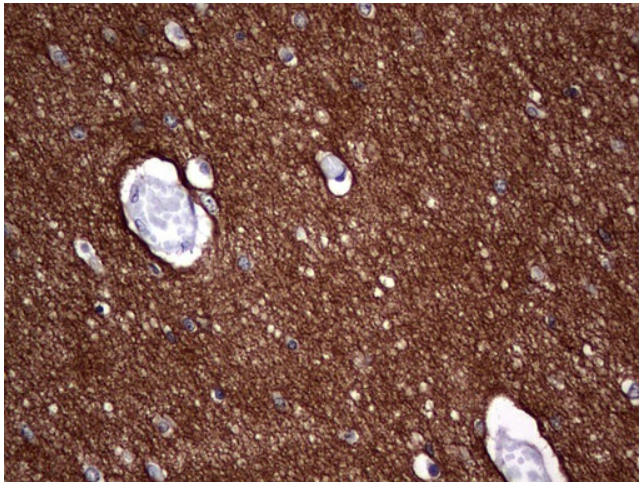
Product images:



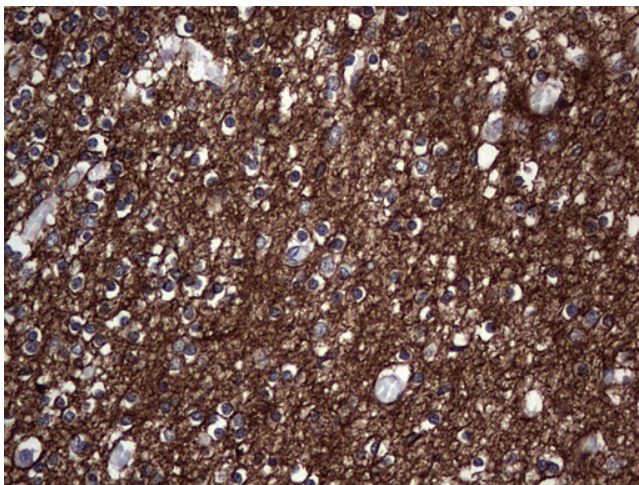
HEK293T cells were transfected with the pCMV6-ENTRY control (Left lane) or pCMV6-ENTRY NCAM1 ([RC207890], Right lane) cDNA for 48 hrs and lysed. Equivalent amounts of cell lysates (5 ug per lane) were separated by SDS-PAGE and immunoblotted with anti-NCAM1. Positive lysates [LY405745] (100ug) and [LC405745] (20ug) can be purchased separately from OriGene.



Immunohistochemical staining of paraffin-embedded Human adult brain tissue using anti-NCAM1 mouse monoclonal antibody. (Heat-induced epitope retrieval by 1mM EDTA in 10mM Tris, pH8.5, 120°C for 3min, [TA804952])



Immunohistochemical staining of paraffin-embedded Human embryonic brain cortex tissue using anti-NCAM1 mouse monoclonal antibody. (Heat-induced epitope retrieval by 1mM EDTA in 10mM Tris, pH8.5, 120°C for 3min, [TA804952])



Immunohistochemical staining of paraffin-embedded Human embryonic cerebellum using anti-NCAM1 mouse monoclonal antibody. (Heat-induced epitope retrieval by 1mM EDTA in 10mM Tris, pH8.5, 120°C for 3min, [TA804952])