

Product datasheet for **TA804950M**

Argininosuccinate Lyase (ASL) Mouse Monoclonal Antibody [Clone ID: OTI14C7]

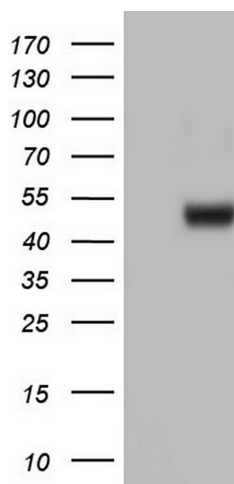
Product data:

Product Type:	Primary Antibodies
Clone Name:	OTI14C7
Applications:	WB
Recommended Dilution:	WB 1:2000
Reactivity:	Human, Mouse, Rat
Host:	Mouse
Isotype:	IgG1
Clonality:	Monoclonal
Immunogen:	Full length human recombinant protein of human ASL (NP_001020114) produced in HEK293T cell.
Formulation:	PBS (pH 7.3) containing 1% BSA, 50% glycerol and 0.02% sodium azide.
Concentration:	1 mg/ml
Purification:	Purified from mouse ascites fluids or tissue culture supernatant by affinity chromatography (protein A/G)
Conjugation:	Unconjugated
Storage:	Store at -20°C as received.
Stability:	Stable for 12 months from date of receipt.
Predicted Protein Size:	51.5 kDa
Gene Name:	argininosuccinate lyase
Database Link:	NP_001020114 Entrez Gene 59085 Rat Entrez Gene 109900 Mouse Entrez Gene 435 Human P04424
Synonyms:	ASAL
Protein Pathways:	Alanine, aspartate and glutamate metabolism, Arginine and proline metabolism, Metabolic pathways

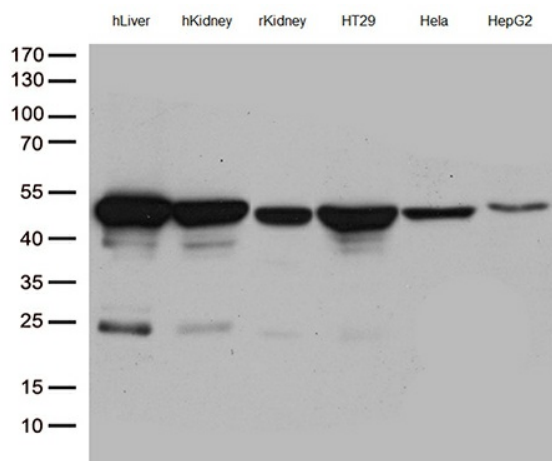


[View online »](#)

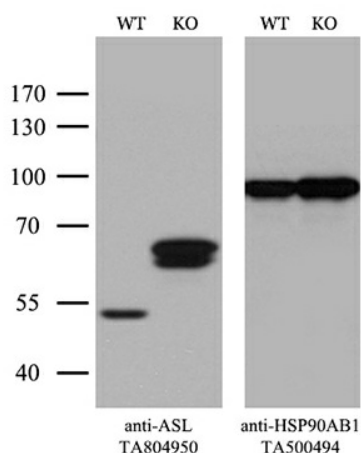
Product images:



HEK293T cells were transfected with the pCMV6-ENTRY control (Left lane) or pCMV6-ENTRY ASL ([RC201568], Right lane) cDNA for 48 hrs and lysed. Equivalent amounts of cell lysates (5 ug per lane) were separated by SDS-PAGE and immunoblotted with anti-ASL. (1: Positive lysates [LY422562] (100ug) and [LC422562] (20ug) can be purchased separately from OriGene.



Western blot analysis of extracts (35ug) from different cell line by using anti-ASL monoclonal antibody (1:500).



Equivalent amounts of cell lysates (10 ug per lane) of wild-type HeLa cells (WT, Cat# LC810HELA) and ASL-Knockout HeLa cells (KO, Cat# [LC810015]) were separated by SDS-PAGE and immunoblotted with anti-ASL monoclonal antibody [TA804950]. Then the blotted membrane was stripped and reprobed with anti-HSP90AB1 antibody ([TA500494]) as a loading control (1:500).