

Product datasheet for **TA804947AM**

BRIT1 (MCPH1) Mouse Monoclonal Antibody (Biotin conjugated) [Clone ID: OTI1B2]

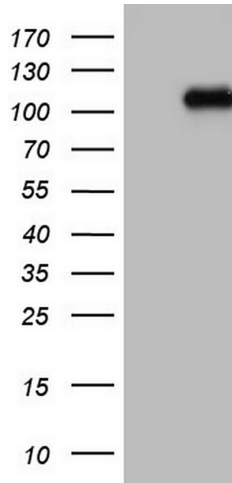
Product data:

Product Type:	Primary Antibodies
Clone Name:	OTI1B2
Applications:	WB
Recommended Dilution:	WB 1:2000
Reactivity:	Human
Host:	Mouse
Isotype:	IgG2a
Clonality:	Monoclonal
Immunogen:	Human recombinant protein fragment corresponding to amino acids 1-264 of human MCPH1 (NP_078872) produced in E.coli.
Formulation:	PBS (pH 7.3) containing 1% BSA, 50% glycerol and 0.02% sodium azide.
Concentration:	0.5 mg/ml
Purification:	Purified from mouse ascites fluids or tissue culture supernatant by affinity chromatography (protein A/G)
Conjugation:	Biotin
Storage:	Store at -20°C as received.
Stability:	Stable for 12 months from date of receipt.
Predicted Protein Size:	92.6 kDa
Gene Name:	microcephalin 1
Database Link:	NP_078872 Entrez Gene 79648 Human Q8NEM0
Synonyms:	BRIT1; MCT



[View online »](#)

Product images:



HEK293T cells were transfected with the pCMV6-ENTRY control (Left lane) or pCMV6-ENTRY MCPH1 ([RC224920], Right lane) cDNA for 48 hrs and lysed. Equivalent amounts of cell lysates (5 ug per lane) were separated by SDS-PAGE and immunoblotted with anti-MCPH1. Positive lysates [LY411212] (100ug) and [LC411212] (20ug) can be purchased separately from OriGene.