

Product datasheet for **TA804937**

ErbB 4 (ERBB4) Mouse Monoclonal Antibody [Clone ID: OTI1E3]

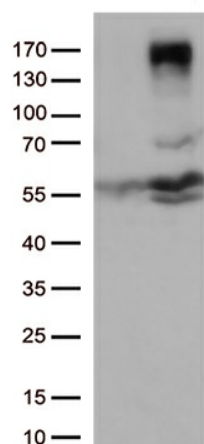
Product data:

Product Type:	Primary Antibodies
Clone Name:	OTI1E3
Applications:	WB
Recommended Dilution:	WB 1:2000
Reactivity:	Human, Mouse, Rat
Host:	Mouse
Isotype:	IgG1
Clonality:	Monoclonal
Immunogen:	Full length human recombinant protein of human ERBB4 (NP_001036064) produced in SF9 cell.
Formulation:	PBS (pH 7.3) containing 1% BSA, 50% glycerol and 0.02% sodium azide.
Concentration:	1 mg/ml
Purification:	Purified from mouse ascites fluids or tissue culture supernatant by affinity chromatography (protein A/G)
Conjugation:	Unconjugated
Storage:	Store at -20°C as received.
Stability:	Stable for 12 months from date of receipt.
Predicted Protein Size:	142.6 kDa
Gene Name:	erb-b2 receptor tyrosine kinase 4
Database Link:	NP_001036064 Entrez Gene 13869 Mouse Entrez Gene 59323 Rat Entrez Gene 2066 Human Q15303
Synonyms:	ALS19; HER4; p180erbB4
Protein Families:	Druggable Genome, Protein Kinase, Transmembrane
Protein Pathways:	Calcium signaling pathway, Endocytosis, ErbB signaling pathway

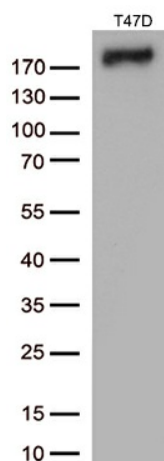


[View online »](#)

Product images:



HEK293T cells were transfected with the pCMV6-ENTRY control (Left lane) or pCMV6-ENTRY ERBB4 ([RC220449], Right lane) cDNA for 48 hrs and lysed. Equivalent amounts of cell lysates (5 ug per lane) were separated by SDS-PAGE and immunoblotted with anti-ERBB4 (1:500).



Western blot analysis of extracts (35ug) from T47D cells by using anti-ERBB4 monoclonal antibody (1:250).