

## Product datasheet for **TA804931BM**

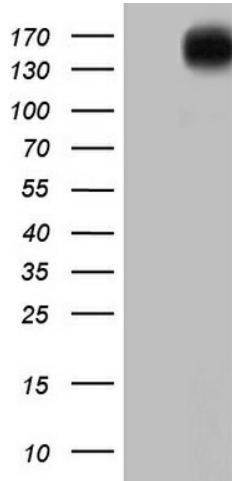
### ErbB 4 (ERBB4) Mouse Monoclonal Antibody (HRP conjugated) [Clone ID: OTI3A10]

#### Product data:

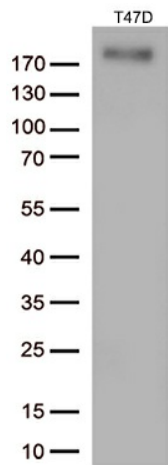
Product Type:	Primary Antibodies
Clone Name:	OTI3A10
Applications:	WB
Recommended Dilution:	WB 1:2000
Reactivity:	Human, Mouse, Rat
Host:	Mouse
Isotype:	IgG1
Clonality:	Monoclonal
Immunogen:	Human recombinant protein fragment corresponding to amino acids 992-1308 of human ERBB4 (NP_005226) produced in E.coli.
Formulation:	PBS (pH 7.3) containing 1% BSA, 50% glycerol.
Concentration:	0.5 mg/ml
Purification:	Purified from mouse ascites fluids or tissue culture supernatant by affinity chromatography (protein A/G)
Conjugation:	HRP
Storage:	Store at -20°C as received.
Stability:	Stable for 12 months from date of receipt.
Predicted Protein Size:	144.2 kDa
Gene Name:	erb-b2 receptor tyrosine kinase 4
Database Link:	<a href="#">NP_005226</a> <a href="#">Entrez Gene 13869 Mouse</a> <a href="#">Entrez Gene 59323 Rat</a> <a href="#">Entrez Gene 2066 Human Q15303</a>
Synonyms:	ALS19; HER4; p180erbB4
Protein Families:	Druggable Genome, Protein Kinase, Transmembrane
Protein Pathways:	Calcium signaling pathway, Endocytosis, ErbB signaling pathway



[View online »](#)

**Product images:**


HEK293T cells were transfected with the pCMV6-ENTRY control (Cat# [PS100001], Left lane) or pCMV6-ENTRY ERBB4 (Cat# [RC220449], Right lane) cDNA for 48 hrs and lysed. Equivalent amounts of cell lysates (5 ug per lane) were separated by SDS-PAGE and immunoblotted with anti-ERBB4(Cat# [TA804931]). Positive lysates [LY401604] (100ug) and [LC401604] (20ug) can be purchased separately from OriGene.



Western blot analysis of extracts (35ug) from T47D cells by using anti-ERBB4 monoclonal antibody (1:250).