

Product datasheet for **TA804931AM**

ErbB 4 (ERBB4) Mouse Monoclonal Antibody (Biotin conjugated) [Clone ID: OTI3A10]

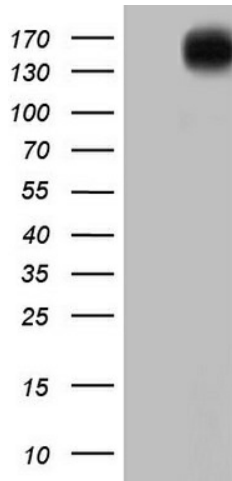
Product data:

| | |
|-------------------------|--|
| Product Type: | Primary Antibodies |
| Clone Name: | OTI3A10 |
| Applications: | WB |
| Recommended Dilution: | WB 1:2000 |
| Reactivity: | Human, Mouse, Rat |
| Host: | Mouse |
| Isotype: | IgG1 |
| Clonality: | Monoclonal |
| Immunogen: | Human recombinant protein fragment corresponding to amino acids 992-1308 of human ERBB4 (NP_005226) produced in E.coli. |
| Formulation: | PBS (pH 7.3) containing 1% BSA, 50% glycerol and 0.02% sodium azide. |
| Concentration: | 0.5 mg/ml |
| Purification: | Purified from mouse ascites fluids or tissue culture supernatant by affinity chromatography (protein A/G) |
| Conjugation: | Biotin |
| Storage: | Store at -20°C as received. |
| Stability: | Stable for 12 months from date of receipt. |
| Predicted Protein Size: | 144.2 kDa |
| Gene Name: | erb-b2 receptor tyrosine kinase 4 |
| Database Link: | NP_005226 Entrez Gene 13869 Mouse Entrez Gene 59323 Rat Entrez Gene 2066 Human Q15303 |
| Synonyms: | ALS19; HER4; p180erbB4 |
| Protein Families: | Druggable Genome, Protein Kinase, Transmembrane |
| Protein Pathways: | Calcium signaling pathway, Endocytosis, ErbB signaling pathway |

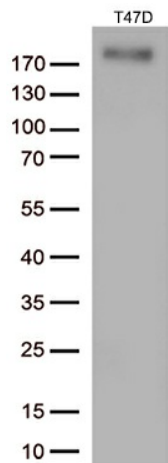


[View online »](#)

Product images:



HEK293T cells were transfected with the pCMV6-ENTRY control (Cat# [PS100001], Left lane) or pCMV6-ENTRY ERBB4 (Cat# [RC220449], Right lane) cDNA for 48 hrs and lysed. Equivalent amounts of cell lysates (5 ug per lane) were separated by SDS-PAGE and immunoblotted with anti-ERBB4(Cat# [TA804931]). Positive lysates [LY401604] (100ug) and [LC401604] (20ug) can be purchased separately from OriGene.



Western blot analysis of extracts (35ug) from T47D cells by using anti-ERBB4 monoclonal antibody (1:250).