

Product datasheet for **TA804920AM**

UBA52 Mouse Monoclonal Antibody (Biotin conjugated) [Clone ID: OTI3C4]

Product data:

| | |
|-------------------------|---|
| Product Type: | Primary Antibodies |
| Clone Name: | OTI3C4 |
| Applications: | WB |
| Recommended Dilution: | WB 1:500 |
| Reactivity: | Human, Mouse |
| Host: | Mouse |
| Isotype: | IgG1 |
| Clonality: | Monoclonal |
| Immunogen: | Human recombinant protein fragment corresponding to amino acids 77-128 of human UBA52 (NP_003324) produced in E.coli. |
| Formulation: | PBS (pH 7.3) containing 1% BSA, 50% glycerol and 0.02% sodium azide. |
| Concentration: | 0.5 mg/ml |
| Purification: | Purified from mouse ascites fluids or tissue culture supernatant by affinity chromatography (protein A/G) |
| Conjugation: | Biotin |
| Storage: | Store at -20°C as received. |
| Stability: | Stable for 12 months from date of receipt. |
| Predicted Protein Size: | 14.5 kDa |
| Gene Name: | ubiquitin A-52 residue ribosomal protein fusion product 1 |
| Database Link: | NP_003324 Entrez Gene 22186 Mouse Entrez Gene 7311 Human P62987 |



[View online »](#)

Background:

Ubiquitin is a highly conserved nuclear and cytoplasmic protein that has a major role in targeting cellular proteins for degradation by the 26S proteasome. It is also involved in the maintenance of chromatin structure, the regulation of gene expression, and the stress response. Ubiquitin is synthesized as a precursor protein consisting of either polyubiquitin chains or a single ubiquitin moiety fused to an unrelated protein. This gene encodes a fusion protein consisting of ubiquitin at the N terminus and ribosomal protein L40 at the C terminus, a C-terminal extension protein (CEP). Multiple processed pseudogenes derived from this gene are present in the genome. [provided by RefSeq, Jul 2008]

Synonyms:

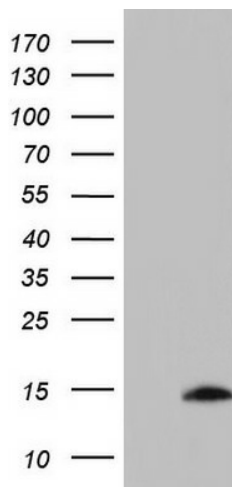
CEP52; HUBCEP52; L40; RPL40

Protein Families:

Druggable Genome, Transcription Factors

Protein Pathways:

Ribosome

Product images:

HEK293T cells were transfected with the pCMV6-ENTRY control (Left lane) or pCMV6-ENTRY UBA52 ([RC211036], Right lane) cDNA for 48 hrs and lysed. Equivalent amounts of cell lysates (5 ug per lane) were separated by SDS-PAGE and immunoblotted with anti-UBA52. Positive lysates [LY418751] (100ug) and [LC418751] (20ug) can be purchased separately from OriGene.