

Product datasheet for **TA804902**

Argininosuccinate Lyase (ASL) Mouse Monoclonal Antibody [Clone ID: OTI9G2]

Product data:

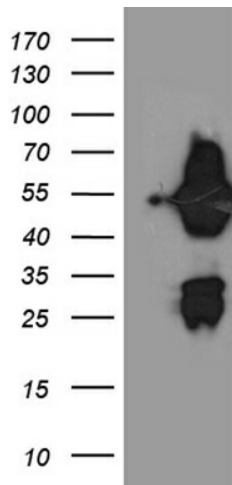
Product Type:	Primary Antibodies
Clone Name:	OTI9G2
Applications:	IHC, Simple Western, WB
Recommended Dilution:	WB 1:500~2000, IHC 1:500, Simple Western 1:20-1:50
Reactivity:	Human, Mouse, Rat
Host:	Mouse
Isotype:	IgG1
Clonality:	Monoclonal
Immunogen:	Full length human recombinant protein of human ASL (NP_001020114) produced in HEK293T cell.
Formulation:	PBS (pH 7.3) containing 1% BSA, 50% glycerol and 0.02% sodium azide.
Concentration:	1 mg/ml
Purification:	Purified from mouse ascites fluids or tissue culture supernatant by affinity chromatography (protein A/G)
Conjugation:	Unconjugated
Storage:	Store at -20°C as received.
Stability:	Stable for 12 months from date of receipt.
Predicted Protein Size:	51.5 kDa
Gene Name:	argininosuccinate lyase
Database Link:	NP_001020114 Entrez Gene 59085 Rat Entrez Gene 109900 Mouse Entrez Gene 435 Human P04424
Synonyms:	ASAL
Protein Pathways:	Alanine, aspartate and glutamate metabolism, Arginine and proline metabolism, Metabolic pathways



[View online »](#)

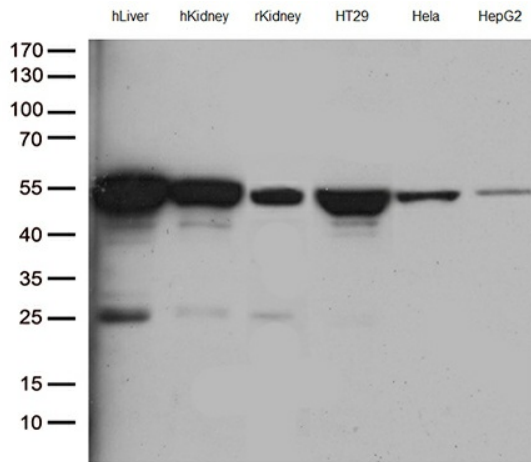
Product images:

□

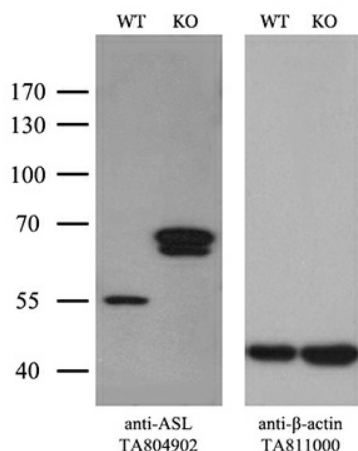


Simple Western™ analysis of endogenous protein ASL from HT29 lysates (0.2 mg/mL) using ASL Mouse Monoclonal Antibody #TA804902. The virtual lane view (left) shows the target (as indicated) at 1:50 dilution of primary antibody. The corresponding electropherogram view (right) plots chemiluminescence by molecular weight along the capillary at a 1:50 dilution of primary antibody. This experiment was performed under reducing conditions on the Jess™ Simple Western instrument from ProteinSimple, a Bio-Techne brand, using the 12–230 kDa Separation Module.

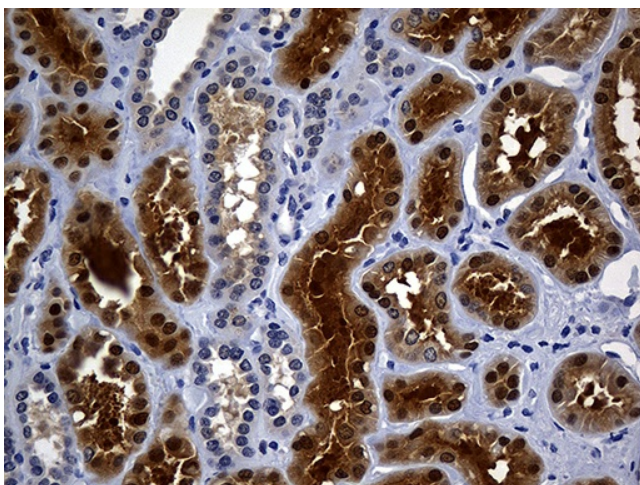
HEK293T cells were transfected with the pCMV6-ENTRY control (Left lane) or pCMV6-ENTRY ASL ([RC201568], Right lane) cDNA for 48 hrs and lysed. Equivalent amounts of cell lysates (5 ug per lane) were separated by SDS-PAGE and immunoblotted with anti-ASL (1:2000). Positive lysates [LY422562] (100ug) and [LC422562] (20ug) can be purchased separately from OriGene.



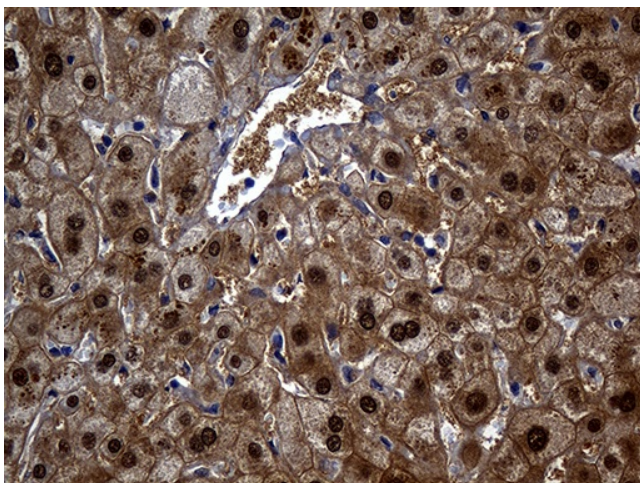
Western blot analysis of extracts (35ug) from different cell line by using anti-CTNND1 monoclonal antibody (1:500).



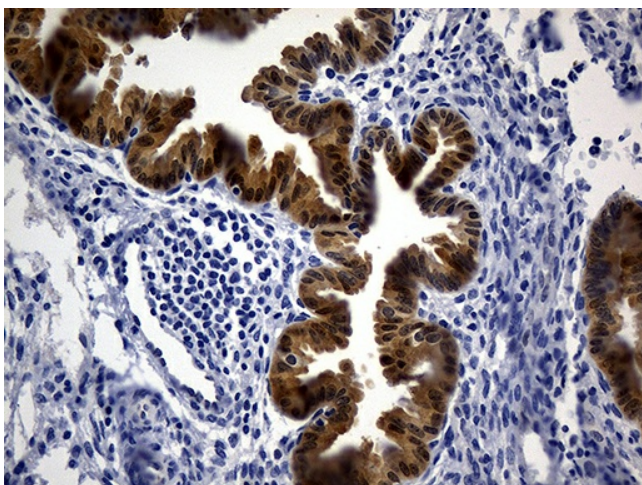
Equivalent amounts of cell lysates (10 ug per lane) of wild-type HeLa cells (WT, Cat# LC810HELA) and ASL-Knockout HeLa cells (KO, Cat# [LC810015]) were separated by SDS-PAGE and immunoblotted with anti-ASL monoclonal antibody TA804902. Then the blotted membrane was stripped and reprobed with anti-β-actin antibody ([TA811000]) as a loading control (1:500).



Immunohistochemical staining of paraffin-embedded Human Kidney tissue within the normal limits using anti-ASL mouse monoclonal antibody. Heat-induced epitope retrieval by EDTA solution buffer pH 8.0 at 120°C for 3 min.



Immunohistochemical staining of paraffin-embedded Human liver tissue within the normal limits using anti-ASL mouse monoclonal antibody. Heat-induced epitope retrieval by EDTA solution buffer pH 8.0 at 120°C for 3 min.



Immunohistochemical staining of paraffin-embedded Human endometrium tissue within the normal limits using anti-ASL mouse monoclonal antibody. Heat-induced epitope retrieval by EDTA solution buffer pH 8.0 at 120°C for 3 min.