

Product datasheet for **TA804900AM**

RSPO3 Mouse Monoclonal Antibody (Biotin conjugated) [Clone ID: OTI4G10]

Product data:

Product Type:	Primary Antibodies
Clone Name:	OTI4G10
Applications:	WB
Recommended Dilution:	WB 1:500
Reactivity:	Human, Mouse, Rat
Host:	Mouse
Isotype:	IgG1
Clonality:	Monoclonal
Immunogen:	Human recombinant protein fragment corresponding to amino acids 22-272 of human RSPO3 (NP_116173) produced in E.coli.
Formulation:	PBS (pH 7.3) containing 1% BSA, 50% glycerol and 0.02% sodium azide.
Concentration:	0.5 mg/ml
Purification:	Purified from mouse ascites fluids or tissue culture supernatant by affinity chromatography (protein A/G)
Conjugation:	Biotin
Storage:	Store at -20°C as received.
Stability:	Stable for 12 months from date of receipt.
Predicted Protein Size:	30.7 kDa
Gene Name:	R-spondin 3
Database Link:	NP_116173 Entrez Gene 72780 Mouse Entrez Gene 498997 Rat Entrez Gene 84870 Human Q9BXY4
Background:	This gene belongs to the R-spondin family. The encoded protein plays a role in the regulation of Wnt (wingless-type MMTV integration site family)/beta-catenin and Wnt/planar cell polarity (PCP) signaling pathways, which are involved in development, cell growth and disease pathogenesis. Genome-wide association studies suggest a correlation of this gene with bone mineral density and risk of fracture. This gene may be involved in tumor development. [provided by RefSeq, Jul 2013]

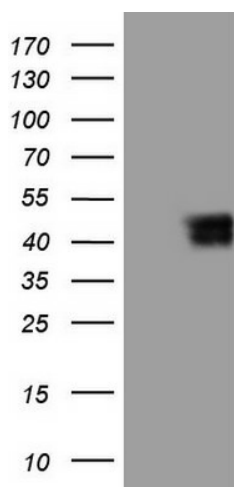


[View online »](#)

Synonyms: CRISTIN1; PWTSR; THSD2

Protein Families: Druggable Genome, Secreted Protein

Product images:



HEK293T cells were transfected with the pCMV6-ENTRY control (Left lane) or pCMV6-ENTRY RSPO3 ([RC205016], Right lane) cDNA for 48 hrs and lysed. Equivalent amounts of cell lysates (5 ug per lane) were separated by SDS-PAGE and immunoblotted with anti-RSPO3 (1:500). Positive lysates [LY403201] (100ug) and [LC403201] (20ug) can be purchased separately from OriGene.