

Product datasheet for **TA804893BM**

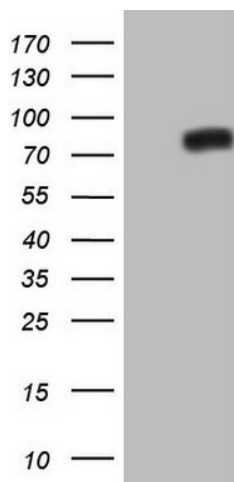
NOR1 (NR4A3) Mouse Monoclonal Antibody (HRP conjugated) [Clone ID: OTI5C2]

Product data:

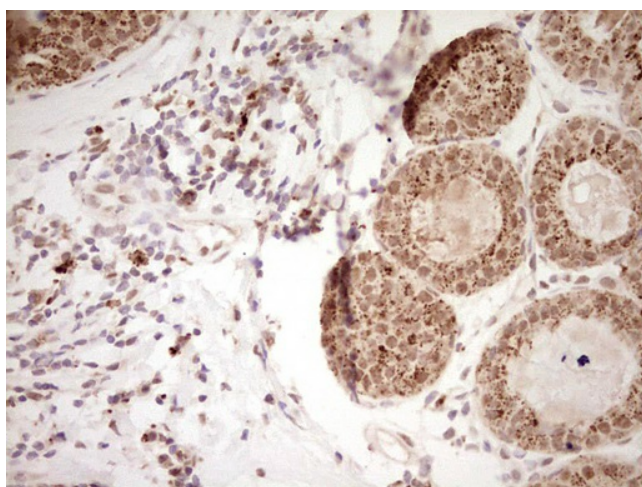
Product Type:	Primary Antibodies
Clone Name:	OTI5C2
Applications:	IHC, WB
Recommended Dilution:	WB 1:2000
Reactivity:	Human, Mouse, Rat
Host:	Mouse
Isotype:	IgG1
Clonality:	Monoclonal
Immunogen:	Human recombinant protein fragment corresponding to amino acids 332-626 of human NR4A3 (NP_008912) produced in E.coli.
Formulation:	PBS (pH 7.3) containing 1% BSA, 50% glycerol.
Concentration:	0.5 mg/ml
Purification:	Purified from mouse ascites fluids or tissue culture supernatant by affinity chromatography (protein A/G)
Conjugation:	HRP
Storage:	Store at -20°C as received.
Stability:	Stable for 12 months from date of receipt.
Gene Name:	nuclear receptor subfamily 4 group A member 3
Database Link:	NP_008912 Entrez Gene 18124 Mouse Entrez Gene 58853 Rat Entrez Gene 8013 Human Q92570
Synonyms:	CHN; CSMF; MINOR; NOR1
Protein Families:	Druggable Genome, Nuclear Hormone Receptor, Transcription Factors



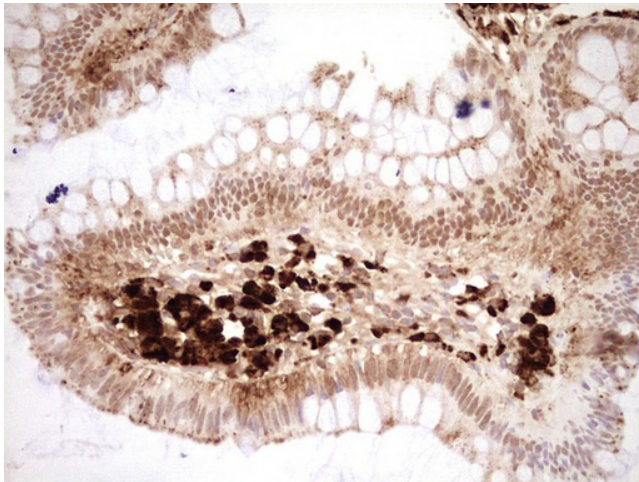
[View online »](#)

Product images:

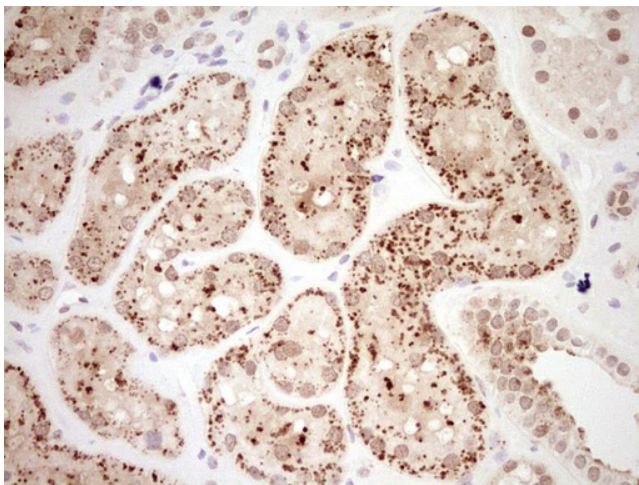
HEK293T cells were transfected with the pCMV6-ENTRY control (Cat# [PS100001], Left lane) or pCMV6-ENTRY NR4A3 (Cat# [RC218250], Right lane) cDNA for 48 hrs and lysed. Equivalent amounts of cell lysates (5 ug per lane) were separated by SDS-PAGE and immunoblotted with anti-NR4A3 (Cat# [TA804893]). Positive lysates [LY429326] (100ug) and [LC429326] (20ug) can be purchased separately from OriGene.



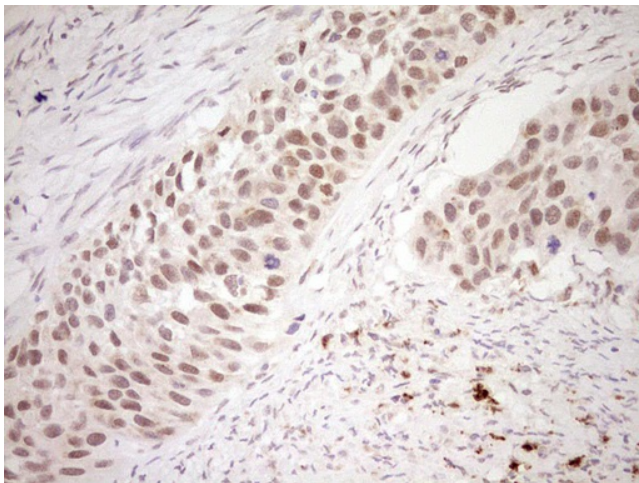
Immunohistochemical staining of paraffin-embedded Adenocarcinoma of Human breast tissue using anti-NR4A3 mouse monoclonal antibody. (Heat-induced epitope retrieval by Tris-EDTA, pH8.0, [TA804893]) Dilution: 1:150



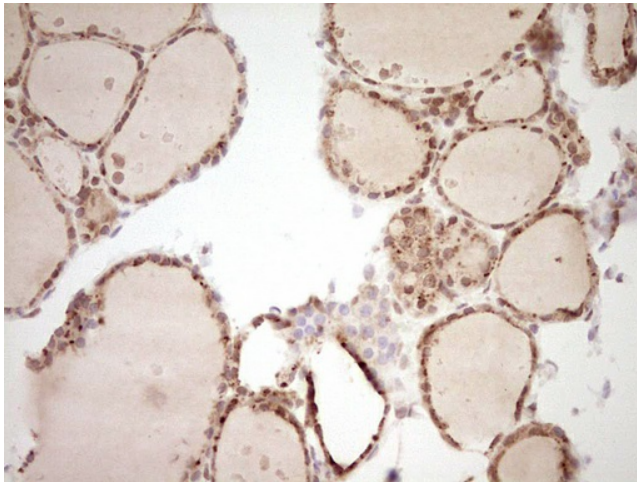
Immunohistochemical staining of paraffin-embedded Human colon tissue within the normal limits using anti-NR4A3 Mouse monoclonal antibody. (Heat-induced epitope retrieval by Tris-EDTA, pH8.0, [TA804893])
Dilution: 1:150



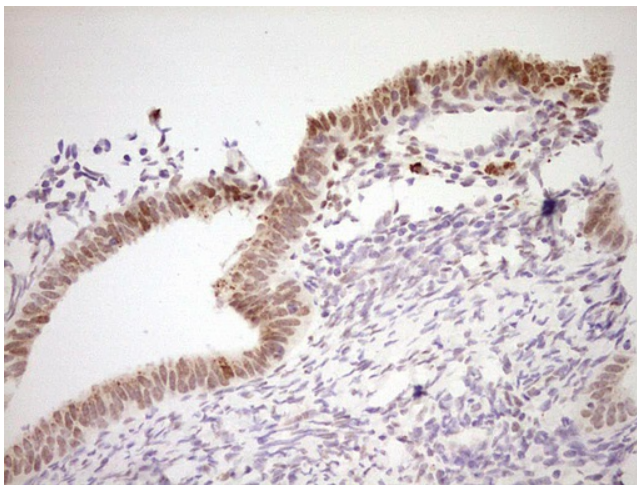
Immunohistochemical staining of paraffin-embedded Human Kidney tissue within the normal limits using anti-NR4A3 mouse monoclonal antibody. (Heat-induced epitope retrieval by Tris-EDTA, pH8.0, [TA804893])
Dilution: 1:150



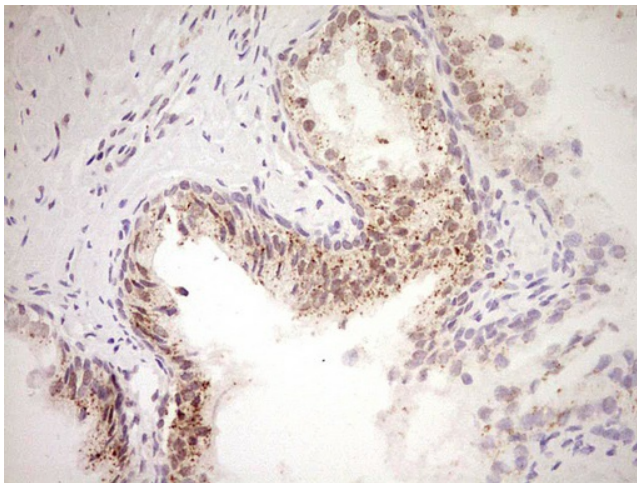
Immunohistochemical staining of paraffin-embedded Carcinoma of Human kidney tissue using anti-NR4A3 mouse monoclonal antibody. (Heat-induced epitope retrieval by Tris-EDTA, pH8.0, [TA804893]) Dilution: 1:150



Immunohistochemical staining of paraffin-embedded Human thyroid tissue within the normal limits using anti-NR4A3 mouse monoclonal antibody. (Heat-induced epitope retrieval by Tris-EDTA, pH8.0, [TA804893])
Dilution: 1:150



Immunohistochemical staining of paraffin-embedded Human endometrium tissue within the normal limits using anti-NR4A3 mouse monoclonal antibody. (Heat-induced epitope retrieval by Tris-EDTA, pH8.0, [TA804893])
Dilution: 1:150



Immunohistochemical staining of paraffin-embedded Human prostate tissue within the normal limits using anti-NR4A3 mouse monoclonal antibody. (Heat-induced epitope retrieval by Tris-EDTA, pH8.0, [TA804893])
Dilution: 1:150