

## Product datasheet for **TA804891S**

### **NOR1 (NR4A3) Mouse Monoclonal Antibody [Clone ID: OTI1C1]**

#### **Product data:**

Product Type:	Primary Antibodies
Clone Name:	OTI1C1
Applications:	WB
Recommended Dilution:	WB 1:2000
Reactivity:	Human, Mouse, Rat
Host:	Mouse
Isotype:	IgG1
Clonality:	Monoclonal
Immunogen:	Human recombinant protein fragment corresponding to amino acids 332-626 of human NR4A3 (NP_008912) produced in E.coli.
Formulation:	PBS (pH 7.3) containing 1% BSA, 50% glycerol and 0.02% sodium azide.
Concentration:	1 mg/ml
Purification:	Purified from mouse ascites fluids or tissue culture supernatant by affinity chromatography (protein A/G)
Conjugation:	Unconjugated
Storage:	Store at -20°C as received.
Stability:	Stable for 12 months from date of receipt.
Predicted Protein Size:	68 kDa
Gene Name:	nuclear receptor subfamily 4 group A member 3
Database Link:	<a href="#">NP_008912</a> <a href="#">Entrez Gene 18124 Mouse</a> <a href="#">Entrez Gene 58853 Rat</a> <a href="#">Entrez Gene 8013 Human</a> <a href="#">Q92570</a>



[View online »](#)

**Background:**

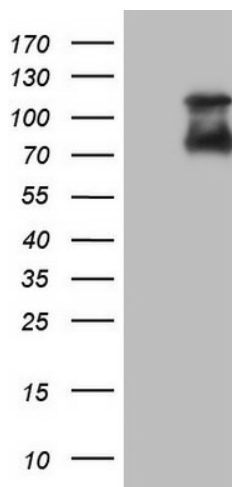
This gene encodes a member of the steroid-thyroid hormone-retinoid receptor superfamily. The encoded protein may act as a transcriptional activator. The protein can efficiently bind the NGFI-B Response Element (NBRE). Three different versions of extraskeletal myxoid chondrosarcomas (EMCs) are the result of reciprocal translocations between this gene and other genes. The translocation breakpoints are associated with Nuclear Receptor Subfamily 4, Group A, Member 3 (on chromosome 9) and either Ewing Sarcome Breakpoint Region 1 (on chromosome 22), RNA Polymerase II, TATA Box-Binding Protein-Associated Factor, 68-KD (on chromosome 17), or Transcription factor 12 (on chromosome 15). Multiple transcript variants encoding different isoforms have been found for this gene. [provided by RefSeq, Mar 2010]

**Synonyms:**

CHN; CSMF; MINOR; NOR1

**Protein Families:**

Druggable Genome, Nuclear Hormone Receptor, Transcription Factors

**Product images:**

HEK293T cells were transfected with the pCMV6-ENTRY control (Left lane) or pCMV6-ENTRY NR4A3 ([RC218250], Right lane) cDNA for 48 hrs and lysed. Equivalent amounts of cell lysates (5 ug per lane) were separated by SDS-PAGE and immunoblotted with anti-NR4A3. Positive lysates [LY429326] (100ug) and [LC429326] (20ug) can be purchased separately from OriGene.