

Product datasheet for **TA804882**

BRIT1 (MCPH1) Mouse Monoclonal Antibody [Clone ID: OTI5F8]

Product data:

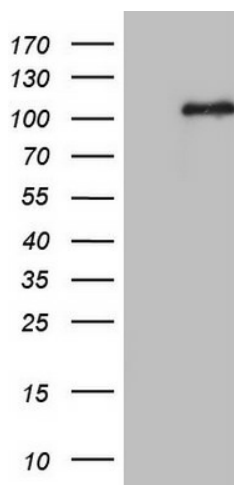
Product Type:	Primary Antibodies
Clone Name:	OTI5F8
Applications:	WB
Recommended Dilution:	WB 1:500
Reactivity:	Human
Host:	Mouse
Isotype:	IgG1
Clonality:	Monoclonal
Immunogen:	Human recombinant protein fragment corresponding to amino acids 1-264 of human MCPH1 (NP_078872) produced in E.coli.
Formulation:	PBS (pH 7.3) containing 1% BSA, 50% glycerol and 0.02% sodium azide.
Concentration:	1 mg/ml
Purification:	Purified from mouse ascites fluids or tissue culture supernatant by affinity chromatography (protein A/G)
Conjugation:	Unconjugated
Storage:	Store at -20°C as received.
Stability:	Stable for 12 months from date of receipt.
Predicted Protein Size:	92.6 kDa
Gene Name:	microcephalin 1
Database Link:	NP_078872 Entrez Gene 79648 Human Q8NEM0
Background:	This gene encodes a DNA damage response protein. The encoded protein may play a role in G2/M checkpoint arrest via maintenance of inhibitory phosphorylation of cyclin-dependent kinase 1. Mutations in this gene have been associated with primary autosomal recessive microcephaly 1 and premature chromosome condensation syndrome. Alternatively spliced transcript variants have been described. [provided by RefSeq, Feb 2010]



[View online »](#)

Synonyms: BRIT1; MCT

Product images:



HEK293T cells were transfected with the pCMV6-ENTRY control (Left lane) or pCMV6-ENTRY MCPH1 ([RC224920], Right lane) cDNA for 48 hrs and lysed. Equivalent amounts of cell lysates (5 ug per lane) were separated by SDS-PAGE and immunoblotted with anti-MCPH1. Positive lysates [LY411212] (100ug) and [LC411212] (20ug) can be purchased separately from OriGene.