

## Product datasheet for **TA804871M**

### **MMP7 Mouse Monoclonal Antibody [Clone ID: OTI2E1]**

#### **Product data:**

Product Type:	Primary Antibodies
Clone Name:	OTI2E1
Applications:	WB
Recommended Dilution:	WB 1:2000
Reactivity:	Human
Host:	Mouse
Isotype:	IgG1
Clonality:	Monoclonal
Immunogen:	Human recombinant protein fragment corresponding to amino acids 95-267 of human MMP7 (NP_002414) produced in E.coli.
Formulation:	PBS (pH 7.3) containing 1% BSA, 50% glycerol and 0.02% sodium azide.
Concentration:	1 mg/ml
Purification:	Purified from mouse ascites fluids or tissue culture supernatant by affinity chromatography (protein A/G)
Conjugation:	Unconjugated
Storage:	Store at -20°C as received.
Stability:	Stable for 12 months from date of receipt.
Predicted Protein Size:	19.1 kDa
Gene Name:	matrix metalloproteinase 7
Database Link:	<a href="#">NP_002414</a> <a href="#">Entrez Gene 4316 Human</a> <a href="#">P09237</a>

[View online »](#)

**Background:**

Proteins of the matrix metalloproteinase (MMP) family are involved in the breakdown of extracellular matrix in normal physiological processes, such as embryonic development, reproduction, and tissue remodeling, as well as in disease processes, such as arthritis and metastasis. Most MMP's are secreted as inactive proproteins which are activated when cleaved by extracellular proteinases. The enzyme encoded by this gene degrades proteoglycans, fibronectin, elastin and casein and differs from most MMP family members in that it lacks a conserved C-terminal protein domain. The enzyme is involved in wound healing, and studies in mice suggest that it regulates the activity of defensins in intestinal mucosa. The gene is part of a cluster of MMP genes which localize to chromosome 11q22.3. [provided by RefSeq, Jul 2008]

**Synonyms:**

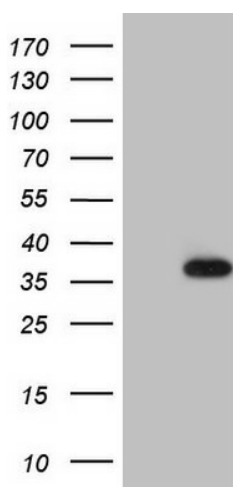
MMP-7; MPSL1; PUMP-1

**Protein Families:**

Druggable Genome, Protease

**Protein Pathways:**

Wnt signaling pathway

**Product images:**


HEK293T cells were transfected with the pCMV6-ENTRY control (Left lane) or pCMV6-ENTRY MMP7 ([RC201225], Right lane) cDNA for 48 hrs and lysed. Equivalent amounts of cell lysates (5 ug per lane) were separated by SDS-PAGE and immunoblotted with anti-MMP7. Positive lysates [LY400865] (100ug) and [LC400865] (20ug) can be purchased separately from OriGene.