

Product datasheet for **TA804863AM**

hHR23b (RAD23B) Mouse Monoclonal Antibody (Biotin conjugated) [Clone ID: OTI9F8]

Product data:

Product Type:	Primary Antibodies
Clone Name:	OTI9F8
Applications:	IHC, WB
Recommended Dilution:	WB 1:2000, IHC 1:150
Reactivity:	Human, Mouse, Rat
Host:	Mouse
Isotype:	IgG1
Clonality:	Monoclonal
Immunogen:	Human recombinant protein fragment corresponding to amino acids 1-253 of human RAD23B (NP_002865) produced in E.coli.
Formulation:	PBS (pH 7.3) containing 1% BSA, 50% glycerol and 0.02% sodium azide.
Concentration:	0.5 mg/ml
Purification:	Purified from mouse ascites fluids or tissue culture supernatant by affinity chromatography (protein A/G)
Conjugation:	Biotin
Storage:	Store at -20°C as received.
Stability:	Stable for 12 months from date of receipt.
Predicted Protein Size:	43 kDa
Gene Name:	RAD23 homolog B, nucleotide excision repair protein
Database Link:	NP_002865 Entrez Gene 19359 Mouse Entrez Gene 298012 Rat Entrez Gene 5887 Human P54727



[View online »](#)

Background:

The protein encoded by this gene is one of two human homologs of *Saccharomyces cerevisiae* Rad23, a protein involved in the nucleotide excision repair (NER). This protein was found to be a component of the protein complex that specifically complements the NER defect of xeroderma pigmentosum group C (XP-c) cell extracts in vitro. This protein was also shown to interact with, and elevate the nucleotide excision activity of 3-methyladenine-DNA glycosylase (MPG), which suggested a role in DNA damage recognition in base excision repair. This protein contains an N-terminal ubiquitin-like domain, which was reported to interact with 26S proteasome, and thus this protein may be involved in the ubiquitin mediated proteolytic pathway in cells. Alternative splicing results in multiple transcript variants encoding distinct isoforms. [provided by RefSeq, Sep 2011]

Synonyms:

HHR23B; HR23B; P58

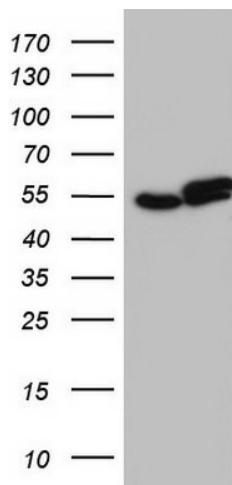
Protein Families:

Druggable Genome

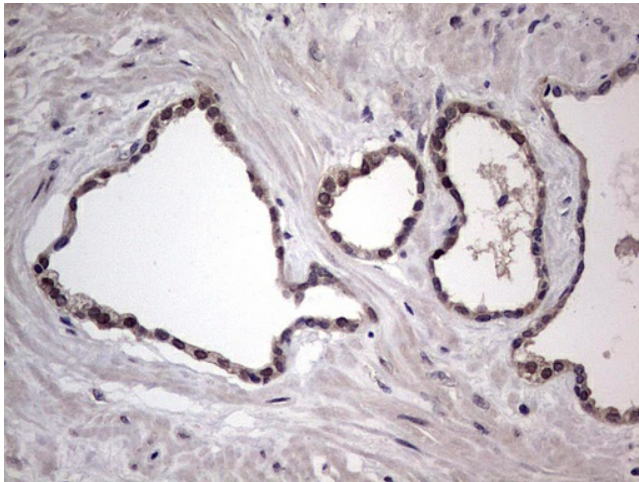
Protein Pathways:

Nucleotide excision repair

Product images:



HEK293T cells were transfected with the pCMV6-ENTRY control (Left lane) or pCMV6-ENTRY RAD23B ([RC202185], Right lane) cDNA for 48 hrs and lysed. Equivalent amounts of cell lysates (5 ug per lane) were separated by SDS-PAGE and immunoblotted with anti-RAD23B. Positive lysates [LY401012] (100ug) and [LC401012] (20ug) can be purchased separately from OriGene.



Immunohistochemical staining of paraffin-embedded Carcinoma of Human prostate tissue using anti-RAD23B Mouse monoclonal antibody. ([TA804863]; heat-induced epitope retrieval by 1mM EDTA in 10mM Tris, pH8.5, 120°C for 3min)