

Product datasheet for **TA804847AM**

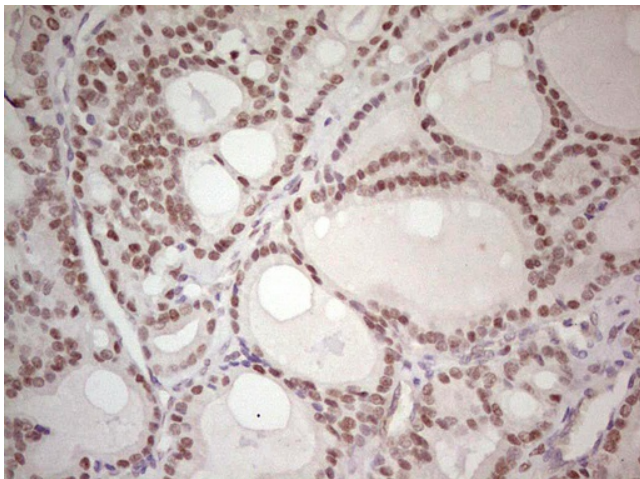
MAD2L1 binding protein (MAD2L1BP) Mouse Monoclonal Antibody (Biotin conjugated) **[Clone ID: OTI1C11]**

Product data:

Product Type:	Primary Antibodies
Clone Name:	OTI1C11
Applications:	IHC
Recommended Dilution:	IHC 1:150
Reactivity:	Human
Host:	Mouse
Isotype:	IgG2b
Clonality:	Monoclonal
Immunogen:	Full length human recombinant protein of human MAD2L1 BP (NP_055443) produced in E.coli.
Formulation:	PBS (pH 7.3) containing 1% BSA, 50% glycerol and 0.02% sodium azide.
Concentration:	0.5 mg/ml
Purification:	Purified from mouse ascites fluids or tissue culture supernatant by affinity chromatography (protein A/G)
Conjugation:	Biotin
Storage:	Store at -20°C as received.
Stability:	Stable for 12 months from date of receipt.
Gene Name:	MAD2L1 binding protein
Database Link:	NP_055443 Entrez Gene 9587 Human Q15013
Synonyms:	CMT2
Protein Families:	Druggable Genome



[View online »](#)

Product images:

Immunohistochemical staining of paraffin-embedded Carcinoma of Human thyroid tissue using anti-MAD2L1BP mouse monoclonal antibody. (Heat-induced epitope retrieval by 1mM EDTA in 10mM Tris, pH8.5, 120°C for 3min, [TA804847])