

Product datasheet for **TA804843**

CD47 Mouse Monoclonal Antibody [Clone ID: B6H12]

Product data:

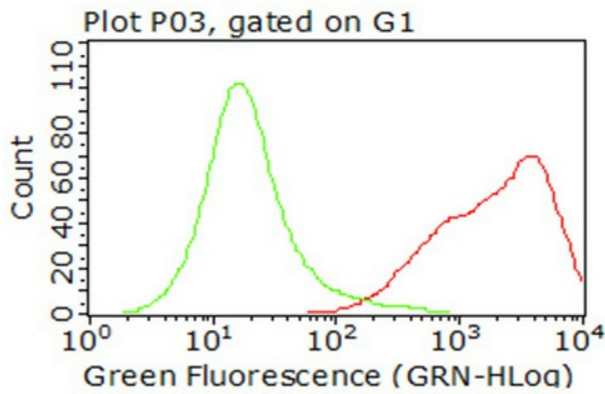
Product Type:	Primary Antibodies
Clone Name:	B6H12
Applications:	FC
Recommended Dilution:	FLOW 1:100
Reactivity:	Human
Host:	Mouse
Isotype:	IgG1
Clonality:	Monoclonal
Immunogen:	Intact CD47 purified from placenta.
Formulation:	PBS (pH 7.3) containing 1% BSA, 50% glycerol and 0.02% sodium azide.
Concentration:	1 mg/ml
Purification:	Purified from mouse ascites fluids or tissue culture supernatant by affinity chromatography (protein A/G)
Conjugation:	Unconjugated
Storage:	Store at -20°C as received.
Stability:	Stable for 12 months from date of receipt.
Predicted Protein Size:	33.4 kDa
Gene Name:	CD47 molecule
Database Link:	NP_001768 Entrez Gene 961 Human Q08722
Background:	This gene encodes a membrane protein, which is involved in the increase in intracellular calcium concentration that occurs upon cell adhesion to extracellular matrix. The encoded protein is also a receptor for the C-terminal cell binding domain of thrombospondin, and it may play a role in membrane transport and signal transduction. This gene has broad tissue distribution, and is reduced in expression on Rh erythrocytes. Alternatively spliced transcript variants have been found for this gene. [provided by RefSeq, Jul 2010]



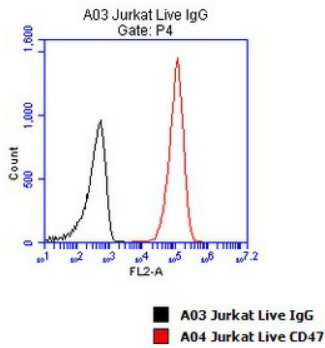
[View online »](#)

Synonyms: IAP; MER6; OA3
Protein Families: Druggable Genome, Transmembrane
Protein Pathways: ECM-receptor interaction

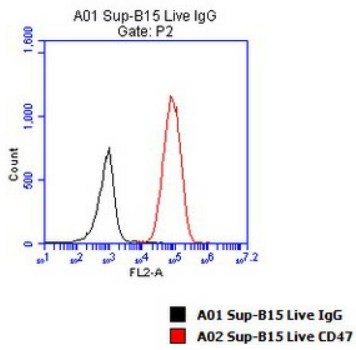
Product images:



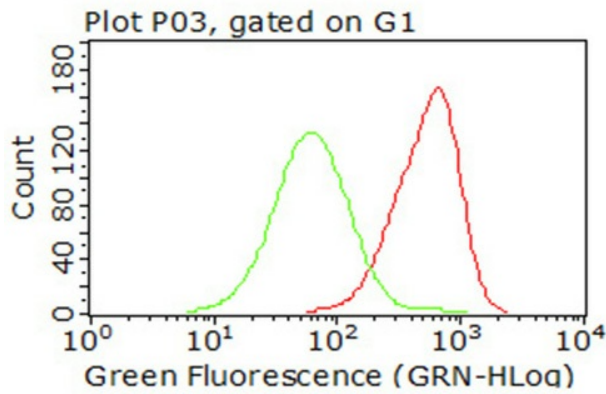
Flow cytometric analysis of living 293T cells transfected with CD47 overexpression plasmid ([RC218813]), Red) using anti-CD47 antibody (TA804843). Cells incubated with a non-specific antibody (Green) were used as isotype control (1:100).



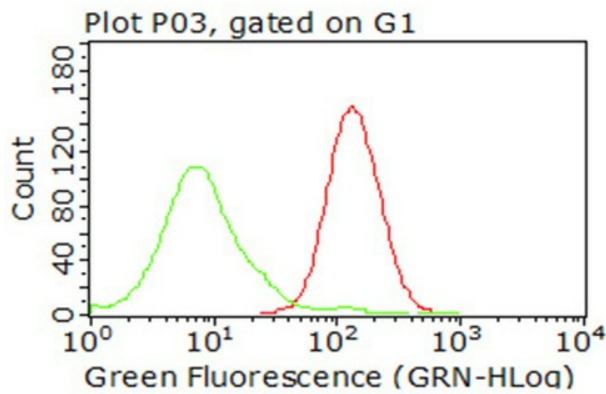
Flow cytometric Analysis of Jurkat live cells, using anti-CD47 antibody (TA804843), (Red), compared to a IgG1 isotype control (Black)



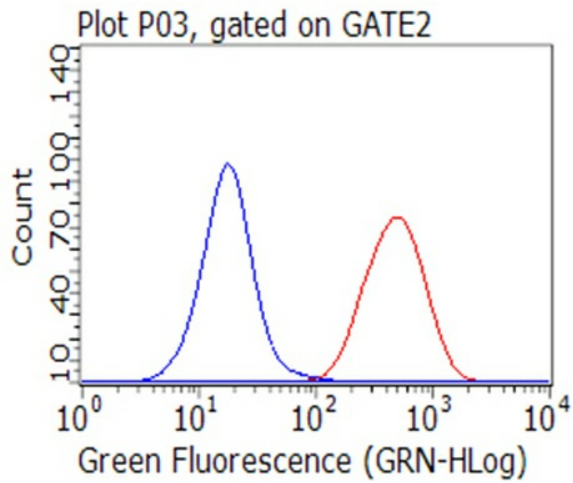
Flow cytometric Analysis of Sup-b15 live cells, using anti-CD47 antibody (TA804843), (Red), compared to a IgG1 isotype control (Black).



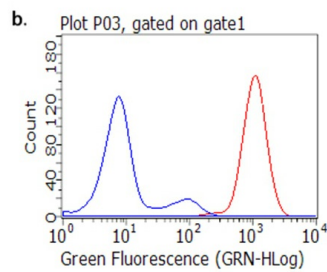
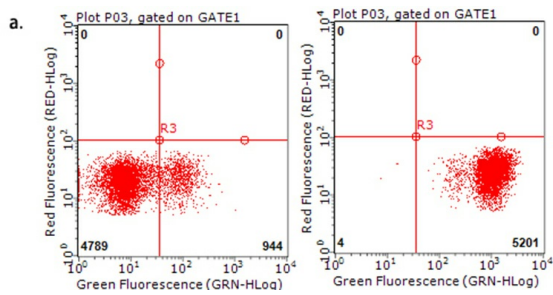
Flow cytometric analysis of living Raji cells, using anti-CD47 antibody (TA804843, Red), compared to an isotype control (green) (1:100).



Flow cytometric analysis of living Ramos cells, using anti-CD47 antibody (TA804843, Red), compared to an isotype control (green) (1:100).



Flow cytometric Analysis of living K562 cells, using anti-CD47 antibody (TA804843), (Red), compared to a mouse IgG control, (Blue) (1:100).



Flow cytometric Analysis of living human peripheral blood cells, using anti-CD47 antibody (TA804843, a.right, b.red), compared to an IgG isotype control (a.left, b.blue) (1:100).