

## Product datasheet for **TA804825AM**

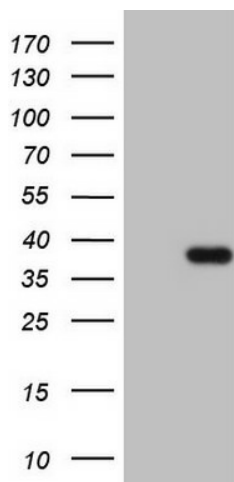
### **CLOCK Mouse Monoclonal Antibody (Biotin conjugated) [Clone ID: OTI4A6]**

#### **Product data:**

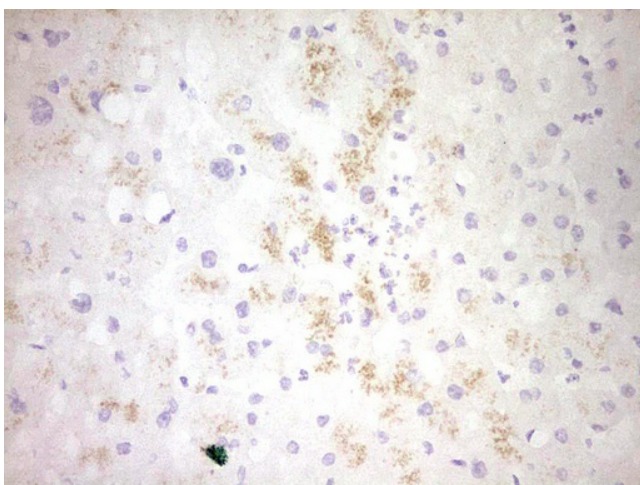
Product Type:	Primary Antibodies
Clone Name:	OTI4A6
Applications:	IHC, WB
Recommended Dilution:	WB 1:2000, IHC 1:150
Reactivity:	Human, Mouse, Rat
Host:	Mouse
Isotype:	IgG1
Clonality:	Monoclonal
Immunogen:	Human recombinant protein fragment corresponding to amino acids 1-285 of human CLOCK (NP_004889) produced in E.coli.
Formulation:	PBS (pH 7.3) containing 1% BSA, 50% glycerol and 0.02% sodium azide.
Concentration:	0.5 mg/ml
Purification:	Purified from mouse ascites fluids or tissue culture supernatant by affinity chromatography (protein A/G)
Conjugation:	Biotin
Storage:	Store at -20°C as received.
Stability:	Stable for 12 months from date of receipt.
Predicted Protein Size:	95.1 kDa
Gene Name:	clock circadian regulator
Database Link:	<a href="#">NP_004889</a> <a href="#">Entrez Gene 12753 Mouse</a> <a href="#">Entrez Gene 60447 Rat</a> <a href="#">Entrez Gene 9575 Human</a> <a href="#">O15516</a>
Synonyms:	bHLHe8; KAT13D
Protein Families:	Druggable Genome, Transcription Factors
Protein Pathways:	Circadian rhythm - mammal



[View online »](#)

**Product images:**

Human recombinant protein fragment corresponding to amino acids 1-285 of human CLOCK (NP\_004889) produced in E.coli.



Immunohistochemical staining of paraffin-embedded Human liver tissue within the normal limits using anti-CLOCK mouse monoclonal antibody. (Heat-induced epitope retrieval by 1mM EDTA in 10mM Tris, pH8.5, 120°C for 3min, [TA804825])