

## Product datasheet for **TA804823AM**

### **ECE1 Mouse Monoclonal Antibody (Biotin conjugated) [Clone ID: OTI2B6]**

#### **Product data:**

<b>Product Type:</b>	Primary Antibodies
<b>Clone Name:</b>	OTI2B6
<b>Applications:</b>	WB
<b>Recommended Dilution:</b>	WB 1:2000
<b>Reactivity:</b>	Human, Mouse, Rat
<b>Host:</b>	Mouse
<b>Isotype:</b>	IgG1
<b>Clonality:</b>	Monoclonal
<b>Immunogen:</b>	Human recombinant protein fragment corresponding to amino acids 486-770 of human ECE1 (NP_001388) produced in E.coli.
<b>Formulation:</b>	PBS (pH 7.3) containing 1% BSA, 50% glycerol and 0.02% sodium azide.
<b>Concentration:</b>	0.5 mg/ml
<b>Purification:</b>	Purified from mouse ascites fluids or tissue culture supernatant by affinity chromatography (protein A/G)
<b>Conjugation:</b>	Biotin
<b>Storage:</b>	Store at -20°C as received.
<b>Stability:</b>	Stable for 12 months from date of receipt.
<b>Predicted Protein Size:</b>	87 kDa
<b>Gene Name:</b>	endothelin converting enzyme 1
<b>Database Link:</b>	<a href="#">NP_001388</a> <a href="#">Entrez Gene 94204 Rat</a> <a href="#">Entrez Gene 230857 Mouse</a> <a href="#">Entrez Gene 1889 Human</a> <a href="#">P42892</a>
<b>Background:</b>	The protein encoded by this gene is involved in proteolytic processing of endothelin precursors to biologically active peptides. Mutations in this gene are associated with Hirschsprung disease, cardiac defects and autonomic dysfunction. Alternatively spliced transcript variants encoding different isoforms have been noted for this gene. [provided by RefSeq, Sep

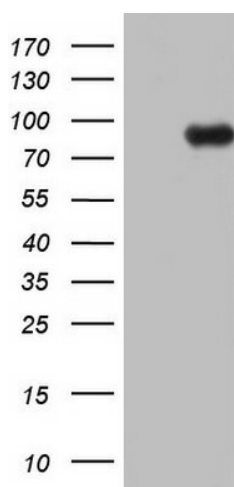


[View online »](#)

Synonyms: ECE

Protein Families: Druggable Genome, Protease, Transmembrane

### Product images:



HEK293T cells were transfected with the pCMV6-ENTRY control (Cat# [PS100001], Left lane) or pCMV6-ENTRY ECE1 (Cat# [RC223135], Right lane) cDNA for 48 hrs and lysed. Equivalent amounts of cell lysates (5 ug per lane) were separated by SDS-PAGE and immunoblotted with anti-ECE1 (Cat# [TA804823]). Positive lysates [LY419958] (100ug) and [LC419958] (20ug) can be purchased separately from OriGene.