

Product datasheet for **TA804820S**

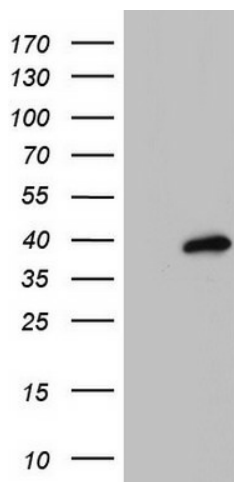
MOX1 (MEOX1) Mouse Monoclonal Antibody [Clone ID: OTI4D3]

Product data:

Product Type:	Primary Antibodies
Clone Name:	OTI4D3
Applications:	WB
Recommended Dilution:	WB 1:2000
Reactivity:	Human
Host:	Mouse
Isotype:	IgG1
Clonality:	Monoclonal
Immunogen:	Full length human recombinant protein of human MEOX1 (NP_004518) produced in E.coli.
Formulation:	PBS (pH 7.3) containing 1% BSA, 50% glycerol and 0.02% sodium azide.
Concentration:	1 mg/ml
Purification:	Purified from mouse ascites fluids or tissue culture supernatant by affinity chromatography (protein A/G)
Conjugation:	Unconjugated
Storage:	Store at -20°C as received.
Stability:	Stable for 12 months from date of receipt.
Predicted Protein Size:	27.8 kDa
Gene Name:	mesenchyme homeobox 1
Database Link:	NP_004518 Entrez Gene 4222 Human P50221
Background:	This gene encodes a member of a subfamily of non-clustered, diverged, antennapedia-like homeobox-containing genes. The encoded protein may play a role in the molecular signaling network regulating somite development. Alternatively spliced transcript variants encoding different isoforms have been described. [provided by RefSeq, Jul 2008]
Synonyms:	KFS2; MOX1
Protein Families:	Transcription Factors



[View online »](#)

Product images:

HEK293T cells were transfected with the pCMV6-ENTRY control (Left lane) or pCMV6-ENTRY MEOX1 [RC210106], Right lane) cDNA for 48 hrs and lysed. Equivalent amounts of cell lysates (5 ug per lane) were separated by SDS-PAGE and immunoblotted with anti-MEOX1. Positive lysates [LY417902] (100ug) and [LC417902] (20ug) can be purchased separately from OriGene.