

## Product datasheet for **TA804806BM**

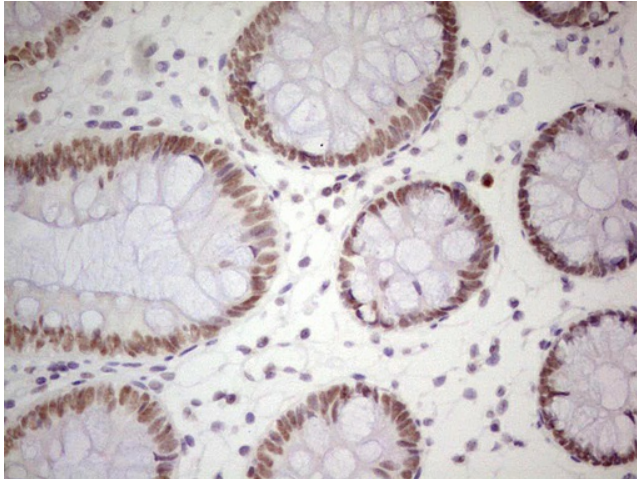
### **NIPP1 (PPP1R8) Mouse Monoclonal Antibody (HRP conjugated) [Clone ID: OTI2E12]**

#### **Product data:**

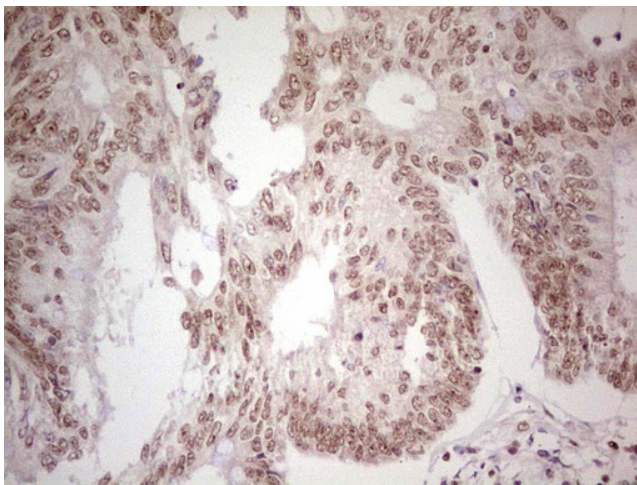
|                       |                                                                                                                                                                               |
|-----------------------|-------------------------------------------------------------------------------------------------------------------------------------------------------------------------------|
| Product Type:         | Primary Antibodies                                                                                                                                                            |
| Clone Name:           | OTI2E12                                                                                                                                                                       |
| Applications:         | IHC                                                                                                                                                                           |
| Recommended Dilution: | IHC 1:150                                                                                                                                                                     |
| Reactivity:           | Human, Mouse, Rat                                                                                                                                                             |
| Host:                 | Mouse                                                                                                                                                                         |
| Isotype:              | IgG1                                                                                                                                                                          |
| Clonality:            | Monoclonal                                                                                                                                                                    |
| Immunogen:            | Human recombinant protein fragment corresponding to amino acids 1-225 of human PPP1R8 (NP_612568) produced in E.coli.                                                         |
| Formulation:          | PBS (pH 7.3) containing 1% BSA, 50% glycerol.                                                                                                                                 |
| Concentration:        | 0.5 mg/ml                                                                                                                                                                     |
| Purification:         | Purified from mouse ascites fluids or tissue culture supernatant by affinity chromatography (protein A/G)                                                                     |
| Conjugation:          | HRP                                                                                                                                                                           |
| Storage:              | Store at -20°C as received.                                                                                                                                                   |
| Stability:            | Stable for 12 months from date of receipt.                                                                                                                                    |
| Gene Name:            | protein phosphatase 1 regulatory subunit 8                                                                                                                                    |
| Database Link:        | <a href="#">NP_612568</a><br><a href="#">Entrez Gene 100336 Mouse</a> <a href="#">Entrez Gene 313030 Rat</a> <a href="#">Entrez Gene 5511 Human</a><br><a href="#">Q12972</a> |
| Synonyms:             | ARD-1; ARD1; NIPP-1; NIPP1; PRO2047                                                                                                                                           |
| Protein Families:     | Druggable Genome, Transcription Factors                                                                                                                                       |



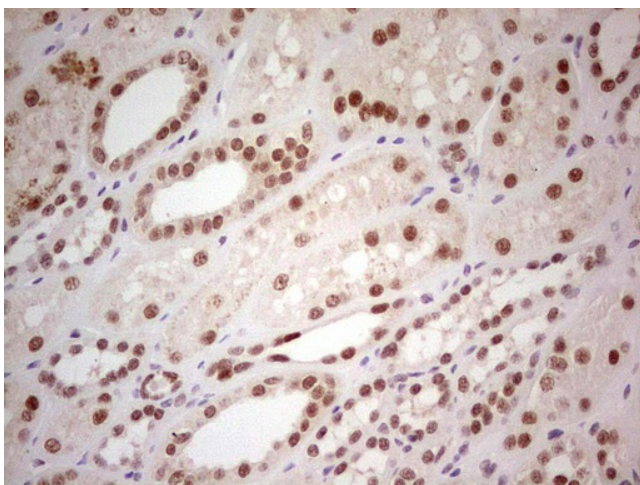
[View online »](#)

**Product images:**

Immunohistochemical staining of paraffin-embedded Human colon tissue within the normal limits using anti-PPP1R8 mouse monoclonal antibody. (Heat-induced epitope retrieval by 1mM EDTA in 10mM Tris, pH8.5, 120°C for 3min, [TA804806])



Immunohistochemical staining of paraffin-embedded Adenocarcinoma of Human colon tissue using anti-PPP1R8 mouse monoclonal antibody. (Heat-induced epitope retrieval by 1mM EDTA in 10mM Tris, pH8.5, 120°C for 3min, [TA804806])



Immunohistochemical staining of paraffin-embedded Human Kidney tissue within the normal limits using anti-PPP1R8 mouse monoclonal antibody. (Heat-induced epitope retrieval by 1mM EDTA in 10mM Tris, pH8.5, 120°C for 3min, [TA804806])