

Product datasheet for **TA804800M**

PTCH2 Mouse Monoclonal Antibody [Clone ID: OT11F5]

Product data:

Product Type:	Primary Antibodies
Clone Name:	OT11F5
Applications:	WB
Recommended Dilution:	WB 1:2000
Reactivity:	Human, Mouse
Host:	Mouse
Isotype:	IgG1
Clonality:	Monoclonal
Immunogen:	Human recombinant protein fragment corresponding to amino acids 79-392 of human PTCH2 (NP_003729) produced in E.coli.
Formulation:	PBS (pH 7.3) containing 1% BSA, 50% glycerol and 0.02% sodium azide.
Concentration:	1 mg/ml
Purification:	Purified from mouse ascites fluids or tissue culture supernatant by affinity chromatography (protein A/G)
Conjugation:	Unconjugated
Storage:	Store at -20°C as received.
Stability:	Stable for 12 months from date of receipt.
Predicted Protein Size:	130.4 kDa
Gene Name:	patched 2
Database Link:	NP_003729 Entrez Gene 19207 Mouse Entrez Gene 8643 Human Q9Y6C5
Background:	This gene encodes a transmembrane receptor of the patched gene family. The encoded protein may function as a tumor suppressor in the hedgehog signaling pathway. Alterations in this gene have been associated with nevoid basal cell carcinoma syndrome, basal cell carcinoma, medulloblastoma, and susceptibility to congenital macrostomia. Alternatively spliced transcript variants have been described. [provided by RefSeq, Oct 2009]

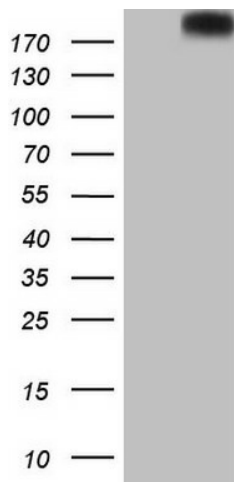

[View online »](#)

Synonyms: PTC2

Protein Families: Druggable Genome, ES Cell Differentiation/IPS, Transmembrane

Protein Pathways: Basal cell carcinoma, Hedgehog signaling pathway, Pathways in cancer

Product images:



HEK293T cells were transfected with the pCMV6-ENTRY control (Cat# [PS100001], Left lane) or pCMV6-ENTRY PTCH2 (Cat# [RC224642], Right lane) cDNA for 48 hrs and lysed. Equivalent amounts of cell lysates (5 ug per lane) were separated by SDS-PAGE and immunoblotted with anti-PTCH2 (Cat# [TA804800]). Positive lysates [LY418463] (100ug) and [LC418463] (20ug) can be purchased separately from OriGene.