

## Product datasheet for **TA804799BM**

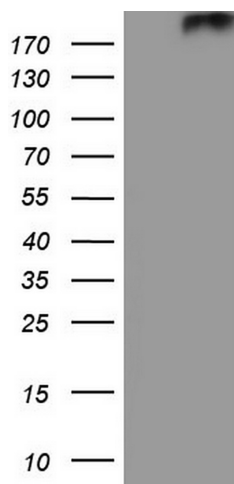
### PTCH2 Mouse Monoclonal Antibody (HRP conjugated) [Clone ID: OTI8B5]

#### Product data:

Product Type:	Primary Antibodies
Clone Name:	OTI8B5
Applications:	WB
Recommended Dilution:	WB 1:2000
Reactivity:	Human, Mouse
Host:	Mouse
Isotype:	IgG1
Clonality:	Monoclonal
Immunogen:	Human recombinant protein fragment corresponding to amino acids 79-392 of human PTCH2 (NP_003729) produced in E.coli.
Formulation:	PBS (pH 7.3) containing 1% BSA, 50% glycerol.
Concentration:	0.5 mg/ml
Purification:	Purified from mouse ascites fluids or tissue culture supernatant by affinity chromatography (protein A/G)
Conjugation:	HRP
Storage:	Store at -20°C as received.
Stability:	Stable for 12 months from date of receipt.
Predicted Protein Size:	130.4 kDa
Gene Name:	patched 2
Database Link:	<a href="#">NP_003729</a> <a href="#">Entrez Gene 19207 Mouse</a> <a href="#">Entrez Gene 8643 Human</a> <a href="#">Q9Y6C5</a>
Synonyms:	PTC2
Protein Families:	Druggable Genome, ES Cell Differentiation/IPS, Transmembrane
Protein Pathways:	Basal cell carcinoma, Hedgehog signaling pathway, Pathways in cancer



[View online »](#)

**Product images:**

HEK293T cells were transfected with the pCMV6-ENTRY control (Left lane) or pCMV6-ENTRY PTCH2 ([RC224642], Right lane) cDNA for 48 hrs and lysed. Equivalent amounts of cell lysates (5 ug per lane) were separated by SDS-PAGE and immunoblotted with anti-PTCH2. Positive lysates [LY418463] (100ug) and [LC418463] (20ug) can be purchased separately from OriGene.