

## Product datasheet for **TA804795**

### Calpain 5 (CAPN5) Mouse Monoclonal Antibody [Clone ID: OTI4H5]

#### Product data:

|                         |  |
|-------------------------|--|
| Product Type:           | Primary Antibodies   |
| Clone Name:             | OTI4H5   |
| Applications:           | WB   |
| Recommended Dilution:   | WB 1:500   |
| Reactivity:             | Human, Mouse, Rat  |
| Host:                   | Mouse  |
| Isotype:                | IgG1   |
| Clonality:              | Monoclonal   |
| Immunogen:              | Human recombinant protein fragment corresponding to amino acids 274-578 of human CAPN5 (NP_004046) produced in E.coli.   |
| Formulation:            | PBS (pH 7.3) containing 1% BSA, 50% glycerol and 0.02% sodium azide.   |
| Concentration:          | 1 mg/ml  |
| Purification:           | Purified from mouse ascites fluids or tissue culture supernatant by affinity chromatography (protein A/G)  |
| Conjugation:            | Unconjugated   |
| Storage:                | Store at -20°C as received.  |
| Stability:              | Stable for 12 months from date of receipt.   |
| Predicted Protein Size: | 73 kDa   |
| Gene Name:              | calpain 5  |
| Database Link:          | <a href="#">NP_004046</a><br><a href="#">Entrez Gene 12337 Mouse</a> <a href="#">Entrez Gene 171495 Rat</a> <a href="#">Entrez Gene 726 Human</a><br><a href="#">O15484</a>  |
| Background:             | Calpains are calcium-dependent cysteine proteases involved in signal transduction in a variety of cellular processes. A functional calpain protein consists of an invariant small subunit and 1 of a family of large subunits. CAPN5 is one of the large subunits. Unlike some of the calpains, CAPN5 and CAPN6 lack a calmodulin-like domain IV. Because of the significant similarity to <i>Caenorhabditis elegans</i> sex determination gene <i>tra-3</i> , CAPN5 is also called as HTRA3. [provided by RefSeq, Jul 2008] |

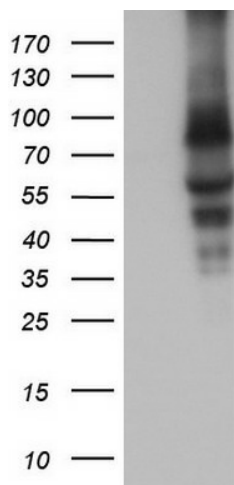


[View online »](#)

**Synonyms:** ADNIV; HTRA3; nCL-3; VRNI

**Protein Families:** Druggable Genome, Protease

**Product images:**



HEK293T cells were transfected with the pCMV6-ENTRY control (Left lane) or pCMV6-ENTRY CAPN5 ([RC202045], Right lane) cDNA for 48 hrs and lysed. Equivalent amounts of cell lysates (5 ug per lane) were separated by SDS-PAGE and immunoblotted with anti-CAPN5. Positive lysates [LY418247] (100ug) and [LC418247] (20ug) can be purchased separately from OriGene.