

## Product datasheet for **TA804787BM**

### Ocular development associated gene (GATAD1) Mouse Monoclonal Antibody (HRP conjugated) [Clone ID: OTI2D5]

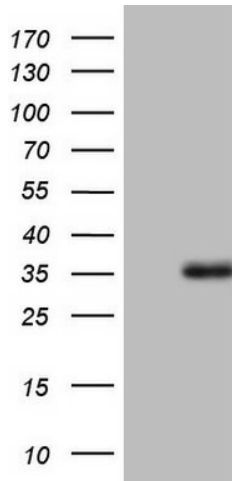
#### Product data:

Product Type:	Primary Antibodies
Clone Name:	OTI2D5
Applications:	WB
Recommended Dilution:	WB 1:2000
Reactivity:	Human, Mouse, Rat
Host:	Mouse
Isotype:	IgG2b
Clonality:	Monoclonal
Immunogen:	Human recombinant protein fragment corresponding to amino acids 68-269 of human GATAD1 (NP_066990) produced in E.coli.
Formulation:	PBS (pH 7.3) containing 1% BSA, 50% glycerol.
Concentration:	0.5 mg/ml
Purification:	Purified from mouse ascites fluids or tissue culture supernatant by affinity chromatography (protein A/G)
Conjugation:	HRP
Storage:	Store at -20°C as received.
Stability:	Stable for 12 months from date of receipt.
Gene Name:	GATA zinc finger domain containing 1
Database Link:	<a href="#">NP_066990</a> <a href="#">Entrez Gene 67210 Mouse</a> <a href="#">Entrez Gene 500005 Rat</a> <a href="#">Entrez Gene 57798 Human</a> <a href="#">Q8WUU5</a>
Synonyms:	CMD2B; ODAG; RG083M05.2
Protein Families:	Transcription Factors



[View online »](#)

## Product images:



HEK293T cells were transfected with the pCMV6-ENTRY control (Left lane) or pCMV6-ENTRY GATAD1 ([RC202984], Right lane) cDNA for 48 hrs and lysed. Equivalent amounts of cell lysates (5 ug per lane) were separated by SDS-PAGE and immunoblotted with anti-GATAD1. Positive lysates [LY402849] (100ug) and [LC402849] (20ug) can be purchased separately from OriGene.