

## Product datasheet for **TA804785AM**

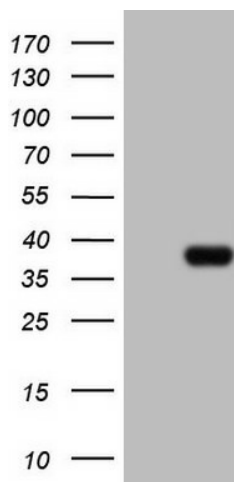
### **CLOCK Mouse Monoclonal Antibody (Biotin conjugated) [Clone ID: OTI2B12]**

#### **Product data:**

|                         |   |
|-------------------------|---|
| Product Type:           | Primary Antibodies  |
| Clone Name:             | OTI2B12   |
| Applications:           | WB  |
| Recommended Dilution:   | WB 1:2000   |
| Reactivity:             | Human, Mouse, Rat   |
| Host:                   | Mouse   |
| Isotype:                | IgG1  |
| Clonality:              | Monoclonal  |
| Immunogen:              | Human recombinant protein fragment corresponding to amino acids 1-285 of human CLOCK (NP_004889) produced in E.coli.  |
| Formulation:            | PBS (pH 7.3) containing 1% BSA, 50% glycerol and 0.02% sodium azide.  |
| Concentration:          | 0.5 mg/ml   |
| Purification:           | Purified from mouse ascites fluids or tissue culture supernatant by affinity chromatography (protein A/G)   |
| Conjugation:            | Biotin  |
| Storage:                | Store at -20°C as received.   |
| Stability:              | Stable for 12 months from date of receipt.  |
| Predicted Protein Size: | 95.1 kDa  |
| Gene Name:              | clock circadian regulator   |
| Database Link:          | <a href="#">NP_004889</a><br><a href="#">Entrez Gene 12753 Mouse</a> <a href="#">Entrez Gene 60447 Rat</a> <a href="#">Entrez Gene 9575 Human</a><br><a href="#">O15516</a> |
| Synonyms:               | bHLHe8; KAT13D  |
| Protein Families:       | Druggable Genome, Transcription Factors   |
| Protein Pathways:       | Circadian rhythm - mammal   |



[View online »](#)

**Product images:**

Human recombinant protein fragment corresponding to amino acids 1-285 of human CLOCK (NP\_004889) produced in E.coli.