

## Product datasheet for **TA804766AM**

### **RSPO1 Mouse Monoclonal Antibody (Biotin conjugated) [Clone ID: OTI1C3]**

#### **Product data:**

<b>Product Type:</b>	Primary Antibodies
<b>Clone Name:</b>	OTI1C3
<b>Applications:</b>	IHC, WB
<b>Recommended Dilution:</b>	WB 1:2000, IHC 1:150
<b>Reactivity:</b>	Human, Mouse, Rat
<b>Host:</b>	Mouse
<b>Isotype:</b>	IgG1
<b>Clonality:</b>	Monoclonal
<b>Immunogen:</b>	Human recombinant protein fragment corresponding to amino acids 21-263 of human RSPO1 (NP_001033722) produced in E.coli.
<b>Formulation:</b>	PBS (pH 7.3) containing 1% BSA, 50% glycerol and 0.02% sodium azide.
<b>Concentration:</b>	0.5 mg/ml
<b>Purification:</b>	Purified from mouse ascites fluids or tissue culture supernatant by affinity chromatography (protein A/G)
<b>Conjugation:</b>	Biotin
<b>Storage:</b>	Store at -20°C as received.
<b>Stability:</b>	Stable for 12 months from date of receipt.
<b>Predicted Protein Size:</b>	28.8 kDa
<b>Gene Name:</b>	R-spondin 1
<b>Database Link:</b>	<a href="#">NP_001033722</a> <a href="#">Entrez Gene 192199 Mouse</a> <a href="#">Entrez Gene 313589 Rat</a> <a href="#">Entrez Gene 284654 Human</a> <a href="#">Q2MKA7</a>
<b>Background:</b>	This gene is a member of the R-spondin family and encodes a secreted activator protein with two cystein-rich, furin-like domains and one thrombospondin type 1 domain. In mice, the protein induces the rapid onset of crypt cell proliferation and increases intestinal epithelial healing, providing a protective effect against chemotherapy-induced adverse effects. [provided by RefSeq, Jul 2008]

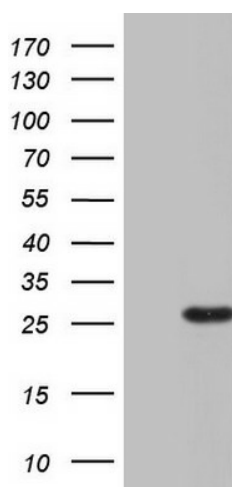


[View online »](#)

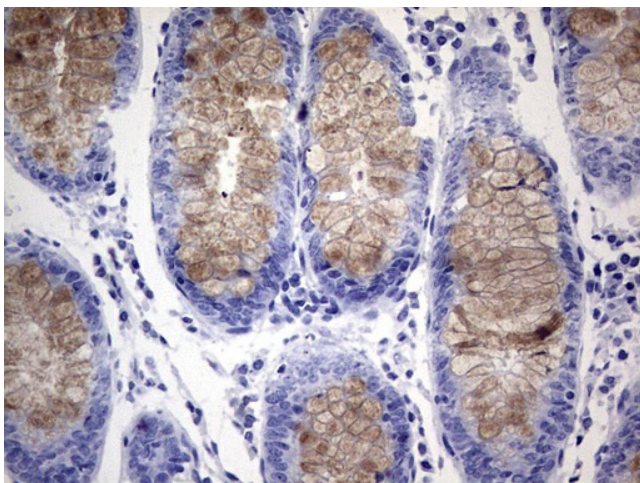
Synonyms: CRISTIN3; RSPO

Protein Families: Secreted Protein

### Product images:



HEK293T cells were transfected with the pCMV6-ENTRY control (Left lane) or pCMV6-ENTRY RSPO1 ([RC217921], Right lane) cDNA for 48 hrs and lysed. Equivalent amounts of cell lysates (5 ug per lane) were separated by SDS-PAGE and immunoblotted with anti-RSPO1. Positive lysates [LY422005] (100ug) and [LC422005] (20ug) can be purchased separately from OriGene.



Immunohistochemical staining of paraffin-embedded Human colon tissue within the normal limits using anti-RSPO1 mouse monoclonal antibody. (Heat-induced epitope retrieval by 1mM EDTA in 10mM Tris, pH8.5, 120°C for 3min, [TA804766])