

## Product datasheet for **TA804764BM**

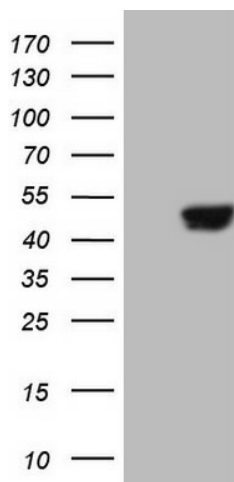
### SAV1 Mouse Monoclonal Antibody (HRP conjugated) [Clone ID: OTI2B7]

#### Product data:

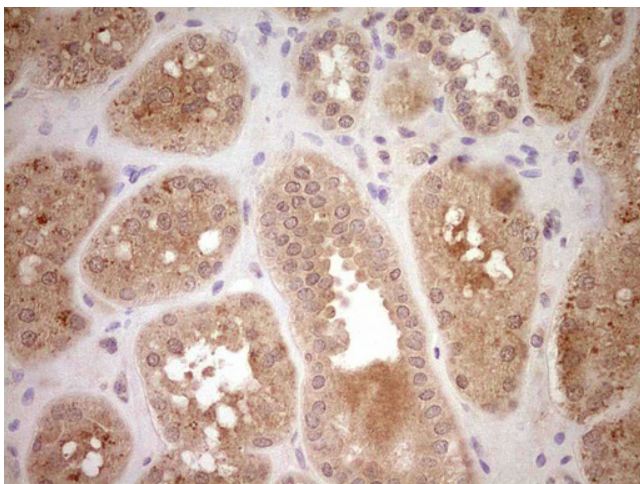
Product Type:	Primary Antibodies
Clone Name:	OTI2B7
Applications:	IHC, WB
Recommended Dilution:	WB 1:2000
Reactivity:	Human, Mouse, Rat
Host:	Mouse
Isotype:	IgG1
Clonality:	Monoclonal
Immunogen:	Human recombinant protein fragment corresponding to amino acids 167-383 of human SAV1 (NP_068590) produced in E.coli.
Formulation:	PBS (pH 7.3) containing 1% BSA, 50% glycerol.
Concentration:	0.5 mg/ml
Purification:	Purified from mouse ascites fluids or tissue culture supernatant by affinity chromatography (protein A/G)
Conjugation:	HRP
Storage:	Store at -20°C as received.
Stability:	Stable for 12 months from date of receipt.
Gene Name:	salvador family WW domain containing protein 1
Database Link:	<a href="#">NP_068590</a> <a href="#">Entrez Gene 64010 Mouse</a> <a href="#">Entrez Gene 60485 Human</a> <a href="#">Q9H4B6</a>
Synonyms:	SAV; WW45; WWP4



[View online »](#)

**Product images:**

HEK293T cells were transfected with the pCMV6-ENTRY control (Cat# [PS100001], Left lane) or pCMV6-ENTRY SAV1 (Cat# [RC204389], Right lane) cDNA for 48 hrs and lysed. Equivalent amounts of cell lysates (5 ug per lane) were separated by SDS-PAGE and immunoblotted with anti-SAV1 (Cat# [TA804764]). Positive lysates [LY402881] (100ug) and [LC402881] (20ug) can be purchased separately from OriGene.



Immunohistochemical staining of paraffin-embedded Human Kidney tissue within the normal limits using anti-SAV1 mouse monoclonal antibody. (Heat-induced epitope retrieval by Tris-EDTA, pH8.0, [TA804764]) Dilution: 1:150