

Product datasheet for **TA804753S**

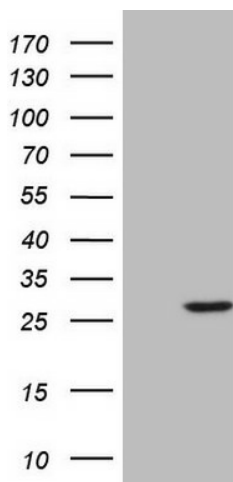
SENP8 Mouse Monoclonal Antibody [Clone ID: OTI3E4]

Product data:

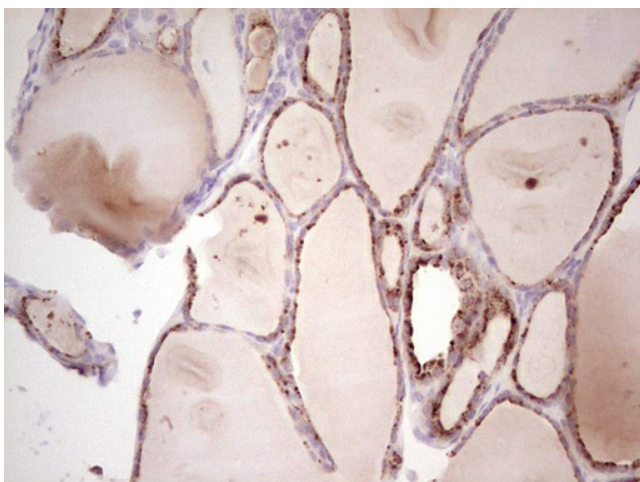
Product Type:	Primary Antibodies
Clone Name:	OTI3E4
Applications:	IHC, WB
Recommended Dilution:	WB 1:2000, IHC 1:150
Reactivity:	Human, Mouse, Rat
Host:	Mouse
Isotype:	IgG1
Clonality:	Monoclonal
Immunogen:	Full length human recombinant protein of human SENP8 (NP_660205) produced in E.coli.
Formulation:	PBS (pH 7.3) containing 1% BSA, 50% glycerol and 0.02% sodium azide.
Concentration:	1 mg/ml
Purification:	Purified from mouse ascites fluids or tissue culture supernatant by affinity chromatography (protein A/G)
Conjugation:	Unconjugated
Storage:	Store at -20°C as received.
Stability:	Stable for 12 months from date of receipt.
Gene Name:	SUMO/sentrin peptidase family member, NEDD8 specific
Database Link:	NP_660205 Entrez Gene 71599 Mouse Entrez Gene 315723 Rat Entrez Gene 123228 Human Q96LD8
Synonyms:	DEN1; NEDP1; PRSC2
Protein Families:	Druggable Genome, Protease



[View online »](#)

Product images:

HEK293T cells were transfected with the pCMV6-ENTRY control (Cat# [PS100001], Left lane) or pCMV6-ENTRY SENP8 (Cat# [RC206791], Right lane) cDNA for 48 hrs and lysed. Equivalent amounts of cell lysates (5 ug per lane) were separated by SDS-PAGE and immunoblotted with anti-SENP8 (Cat# [TA804753]). Positive lysates [LY407943] (100ug) and [LC407943] (20ug) can be purchased separately from OriGene.



Immunohistochemical staining of paraffin-embedded Human thyroid tissue within the normal limits using anti-SENP8 mouse monoclonal antibody. (Heat-induced epitope retrieval by 1mM EDTA in 10mM Tris, pH8.5, 120°C for 3min, [TA804753])