

Product datasheet for **TA804723**

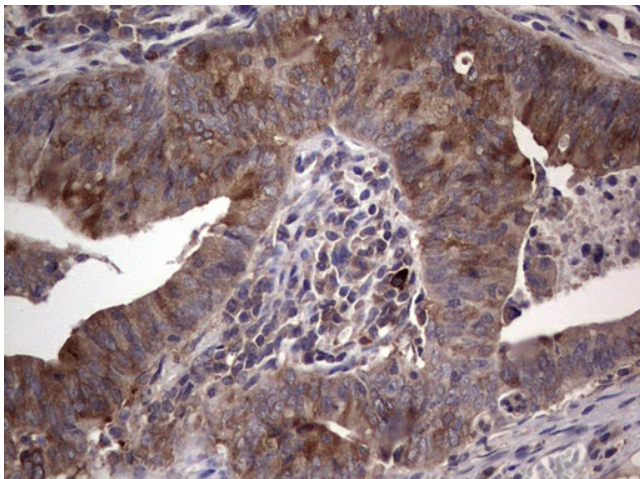
RRM1 Mouse Monoclonal Antibody [Clone ID: OTI17C3]

Product data:

Product Type:	Primary Antibodies
Clone Name:	OTI17C3
Applications:	IHC
Recommended Dilution:	IHC 1:150
Reactivity:	Human, Mouse, Rat
Host:	Mouse
Isotype:	IgG1
Clonality:	Monoclonal
Immunogen:	Human recombinant protein fragment corresponding to amino acids 541-792 of human RRM1 (NP_001024) produced in E.coli.
Formulation:	PBS (pH 7.3) containing 1% BSA, 50% glycerol and 0.02% sodium azide.
Concentration:	1 mg/ml
Purification:	Purified from mouse ascites fluids or tissue culture supernatant by affinity chromatography (protein A/G)
Conjugation:	Unconjugated
Storage:	Store at -20°C as received.
Stability:	Stable for 12 months from date of receipt.
Predicted Protein Size:	89.9 kDa
Gene Name:	ribonucleotide reductase catalytic subunit M1
Database Link:	NP_001024 Entrez Gene 20133 Mouse Entrez Gene 685579 Rat Entrez Gene 6240 Human P23921
Synonyms:	R1; RIR1; RR1
Protein Families:	Druggable Genome
Protein Pathways:	Glutathione metabolism, Metabolic pathways, Purine metabolism, Pyrimidine metabolism



[View online »](#)

Product images:

Immunohistochemical staining of paraffin-embedded Adenocarcinoma of Human colon tissue using anti-RRM1 mouse monoclonal antibody. (Heat-induced epitope retrieval by 1mM EDTA in 10mM Tris, pH8.5, 120°C for 3min, TA804723)