

## Product datasheet for **TA804709**

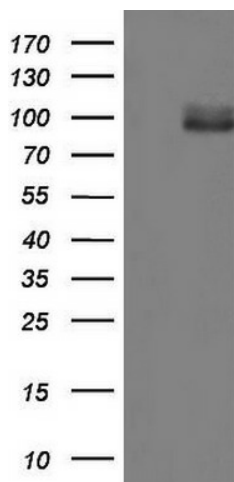
### MDM2 Mouse Monoclonal Antibody [Clone ID: OTI8F7]

#### Product data:

Product Type:	Primary Antibodies
Clone Name:	OTI8F7
Applications:	WB
Recommended Dilution:	WB 1:2000
Reactivity:	Human
Host:	Mouse
Isotype:	IgG1
Clonality:	Monoclonal
Immunogen:	Human recombinant protein fragment corresponding to amino acids 119-438 of human MDM2 (NP_002383) produced in E.coli.
Formulation:	PBS (pH 7.3) containing 1% BSA, 50% glycerol and 0.02% sodium azide.
Concentration:	1 mg/ml
Purification:	Purified from mouse ascites fluids or tissue culture supernatant by affinity chromatography (protein A/G)
Conjugation:	Unconjugated
Storage:	Store at -20°C as received.
Stability:	Stable for 12 months from date of receipt.
Predicted Protein Size:	55.8 kDa
Gene Name:	MDM2 proto-oncogene
Database Link:	<a href="#">NP_002383</a> <a href="#">Entrez Gene 4193 Human</a> <a href="#">Q00987</a>
Synonyms:	ACTFS; hdm2; HDMX
Protein Families:	Druggable Genome, Transcription Factors
Protein Pathways:	Bladder cancer, Cell cycle, Chronic myeloid leukemia, Endocytosis, Glioma, Melanoma, p53 signaling pathway, Pathways in cancer, Prostate cancer, Ubiquitin mediated proteolysis



[View online »](#)

**Product images:**

HEK293T cells were transfected with the pCMV6-ENTRY control (Left lane) or pCMV6-ENTRY MDM2 ([RC219518], Right lane) cDNA for 48 hrs and lysed. Equivalent amounts of cell lysates (5 ug per lane) were separated by SDS-PAGE and immunoblotted with anti-MDM2. Positive lysates [LY400855] (100ug) and [LC400855] (20ug) can be purchased separately from OriGene.