

## Product datasheet for **TA804650BM**

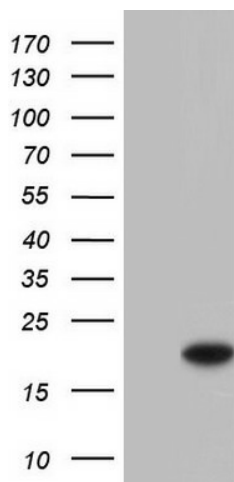
### **SNX12 Mouse Monoclonal Antibody (HRP conjugated) [Clone ID: OTI3A4]**

#### **Product data:**

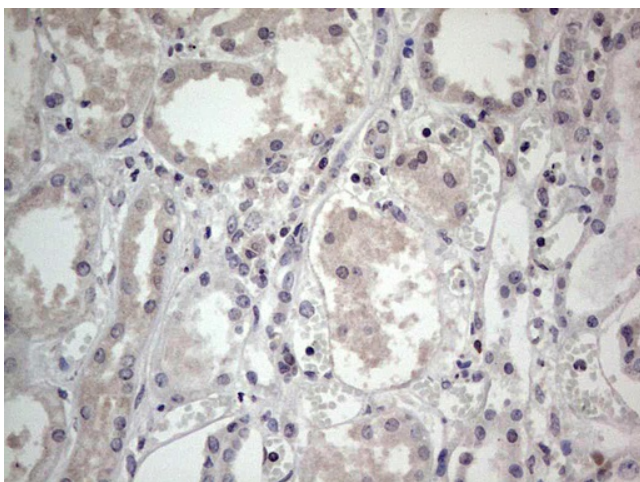
Product Type:	Primary Antibodies
Clone Name:	OTI3A4
Applications:	IHC, WB
Recommended Dilution:	WB 1:2000, IHC 1:150
Reactivity:	Human, Mouse, Rat
Host:	Mouse
Isotype:	IgG1
Clonality:	Monoclonal
Immunogen:	Full length human recombinant protein of human SNX12 (NP_037478) produced in E.coli.
Formulation:	PBS (pH 7.3) containing 1% BSA, 50% glycerol.
Concentration:	0.5 mg/ml
Purification:	Purified from mouse ascites fluids or tissue culture supernatant by affinity chromatography (protein A/G)
Conjugation:	HRP
Storage:	Store at -20°C as received.
Stability:	Stable for 12 months from date of receipt.
Predicted Protein Size:	18.7 kDa
Gene Name:	sorting nexin 12
Database Link:	<a href="#">NP_037478</a> <a href="#">Entrez Gene 55988 Mouse</a> <a href="#">Entrez Gene 363478 Rat</a> <a href="#">Entrez Gene 29934 Human</a> <a href="#">Q9UMY4</a>
Synonyms:	MGC118982; MGC118983



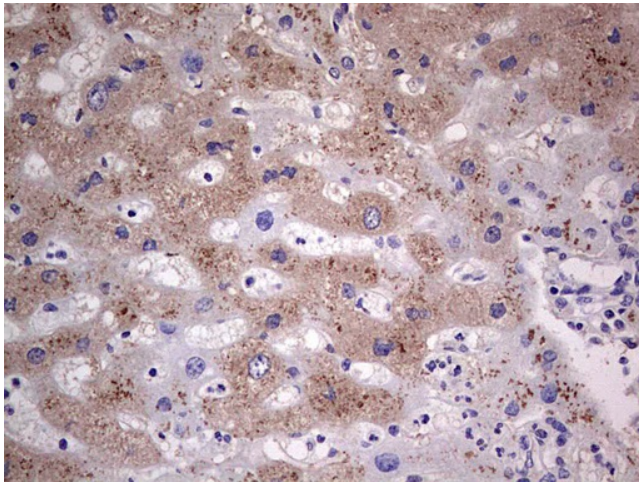
[View online »](#)

**Product images:**

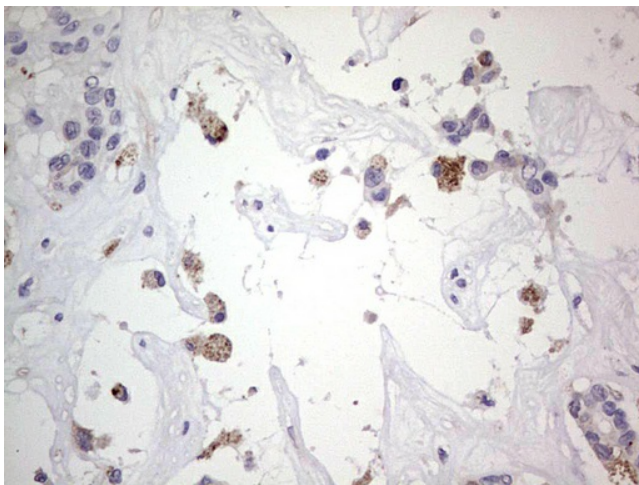
HEK293T cells were transfected with the pCMV6-ENTRY control (Cat# [PS100001], Left lane) or pCMV6-ENTRY SNX12 (Cat# [RC224303], Right lane) cDNA for 48 hrs and lysed. Equivalent amounts of cell lysates (5 ug per lane) were separated by SDS-PAGE and immunoblotted with anti-SNX12(Cat# [TA804650]). Positive lysates [LY415650] (100ug) and [LC415650] (20ug) can be purchased separately from OriGene.



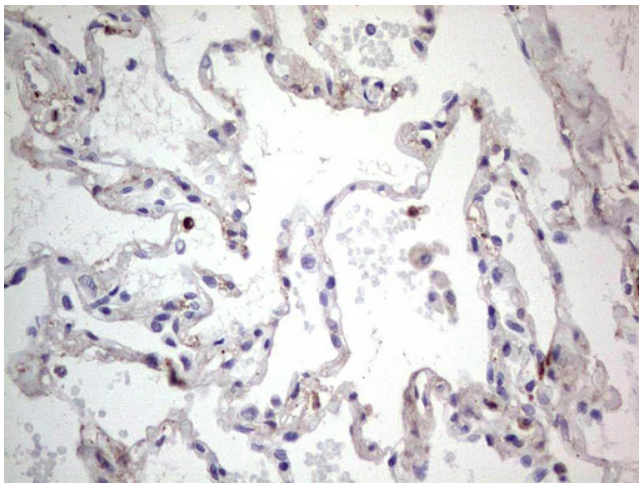
Immunohistochemical staining of paraffin-embedded Human Kidney tissue within the normal limits using anti-SNX12 mouse monoclonal antibody. (Heat-induced epitope retrieval by 1mM EDTA in 10mM Tris, pH8.5, 120°C for 3min, [TA804650])



Immunohistochemical staining of paraffin-embedded Human liver tissue within the normal limits using anti-SNX12 mouse monoclonal antibody. (Heat-induced epitope retrieval by 1mM EDTA in 10mM Tris, pH8.5, 120°C for 3min, [TA804650])

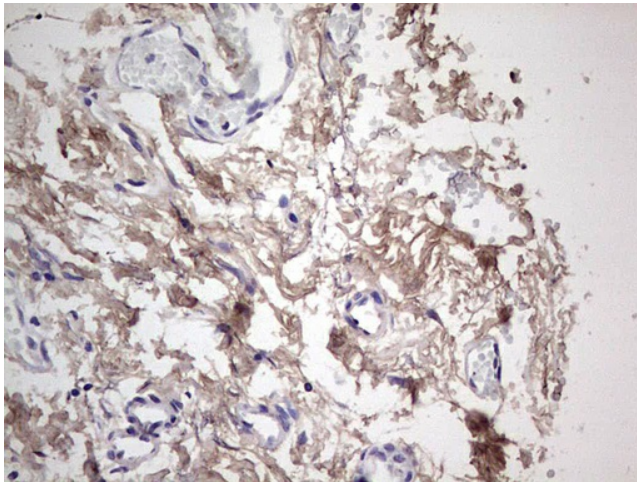


Immunohistochemical staining of paraffin-embedded Carcinoma of Human liver tissue using anti-SNX12 mouse monoclonal antibody. (Heat-induced epitope retrieval by 1mM EDTA in 10mM Tris, pH8.5, 120°C for 3min, [TA804650])

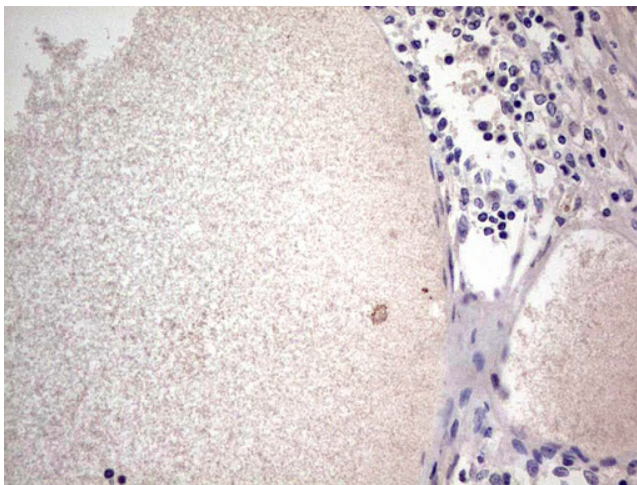


Immunohistochemical staining of paraffin-embedded Human lung tissue within the normal limits using anti-SNX12 mouse monoclonal antibody. (Heat-induced epitope retrieval by 1mM EDTA in 10mM Tris, pH8.5, 120°C for 3min, [TA804650])

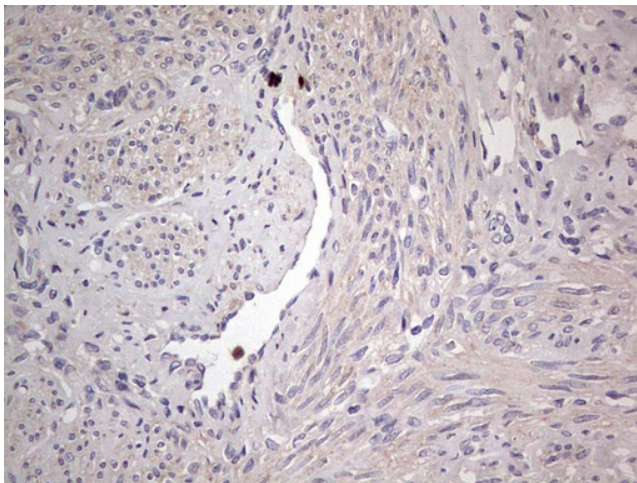




Immunohistochemical staining of paraffin-embedded Carcinoma of Human pancreas tissue using anti-SNX12 mouse monoclonal antibody. (Heat-induced epitope retrieval by 1mM EDTA in 10mM Tris, pH8.5, 120°C for 3min, [TA804650])



Immunohistochemical staining of paraffin-embedded Human thyroid tissue within the normal limits using anti-SNX12 mouse monoclonal antibody. (Heat-induced epitope retrieval by 1mM EDTA in 10mM Tris, pH8.5, 120°C for 3min, [TA804650])



Immunohistochemical staining of paraffin-embedded Human endometrium tissue within the normal limits using anti-SNX12 mouse monoclonal antibody. (Heat-induced epitope retrieval by 1mM EDTA in 10mM Tris, pH8.5, 120°C for 3min, [TA804650])