

Product datasheet for **TA804628BM**

Ocular development associated gene (GATAD1) Mouse Monoclonal Antibody (HRP conjugated) [Clone ID: OTI1H1]

Product data:

Product Type:	Primary Antibodies
Clone Name:	OTI1H1
Applications:	WB
Recommended Dilution:	WB 1:500
Reactivity:	Human, Mouse, Rat
Host:	Mouse
Isotype:	IgG1
Clonality:	Monoclonal
Immunogen:	Human recombinant protein fragment corresponding to amino acids 68-269 of human GATAD1 (NP_066990) produced in E.coli.
Formulation:	PBS (pH 7.3) containing 1% BSA, 50% glycerol.
Concentration:	0.5 mg/ml
Purification:	Purified from mouse ascites fluids or tissue culture supernatant by affinity chromatography (protein A/G)
Conjugation:	HRP
Storage:	Store at -20°C as received.
Stability:	Stable for 12 months from date of receipt.
Predicted Protein Size:	28.5 kDa
Gene Name:	GATA zinc finger domain containing 1
Database Link:	NP_066990 Entrez Gene 67210 Mouse Entrez Gene 500005 Rat Entrez Gene 57798 Human Q8WUU5
Background:	The protein encoded by this gene contains a zinc finger at the N-terminus, and is thought to bind to a histone modification site that regulates gene expression. Mutations in this gene have been associated with autosomal recessive dilated cardiomyopathy. Alternatively spliced transcript variants have been found for this gene. [provided by RefSeq, Jun 2012]

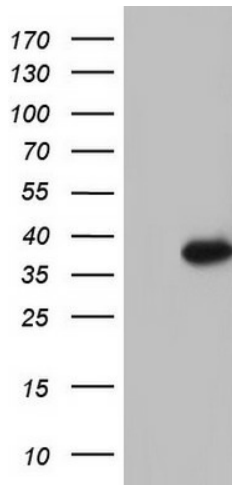


[View online »](#)

Synonyms: CMD2B; ODAG; RG083M05.2

Protein Families: Transcription Factors

Product images:



HEK293T cells were transfected with the pCMV6-ENTRY control (Left lane) or pCMV6-ENTRY GATAD1 ([RC202984], Right lane) cDNA for 48 hrs and lysed. Equivalent amounts of cell lysates (5 ug per lane) were separated by SDS-PAGE and immunoblotted with anti-GATAD1. Positive lysates [LY402849] (100ug) and [LC402849] (20ug) can be purchased separately from OriGene.