

## Product datasheet for **TA804626BM**

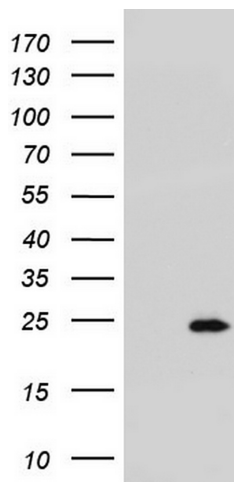
### RSPO1 Mouse Monoclonal Antibody (HRP conjugated) [Clone ID: OTI11A9]

#### Product data:

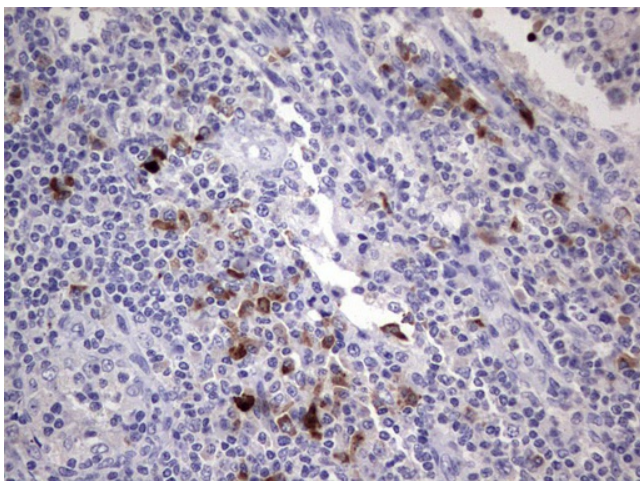
Product Type:	Primary Antibodies
Clone Name:	OTI11A9
Applications:	IHC, WB
Recommended Dilution:	WB 1:2000, IHC 1:150
Reactivity:	Human, Mouse, Rat
Host:	Mouse
Isotype:	IgG2b
Clonality:	Monoclonal
Immunogen:	Human recombinant protein fragment corresponding to amino acids 21-263 of human RSPO1 (NP_001033722) produced in E.coli.
Formulation:	PBS (pH 7.3) containing 1% BSA, 50% glycerol.
Concentration:	0.5 mg/ml
Purification:	Purified from mouse ascites fluids or tissue culture supernatant by affinity chromatography (protein A/G)
Conjugation:	HRP
Storage:	Store at -20°C as received.
Stability:	Stable for 12 months from date of receipt.
Predicted Protein Size:	28.8 kDa
Gene Name:	R-spondin 1
Database Link:	<a href="#">NP_001033722</a> <a href="#">Entrez Gene 192199 Mouse</a> <a href="#">Entrez Gene 313589 Rat</a> <a href="#">Entrez Gene 284654 Human</a> <a href="#">Q2MKA7</a>
Synonyms:	CRISTIN3; RSPO
Protein Families:	Secreted Protein



[View online »](#)

**Product images:**

HEK293T cells were transfected with the pCMV6-ENTRY control (Cat# [PS100001], Left lane) or pCMV6-ENTRY RSPO1 (Cat# [RC217921], Right lane) cDNA for 48 hrs and lysed. Equivalent amounts of cell lysates (5 ug per lane) were separated by SDS-PAGE and immunoblotted with anti-RSPO1 (Cat# [TA804626]). Positive lysates [LY422005] (100ug) and [LC422005] (20ug) can be purchased separately from OriGene.



Immunohistochemical staining of paraffin-embedded Human lymph node tissue within the normal limits using anti-RSPO1 mouse monoclonal antibody. (Heat-induced epitope retrieval by 1mM EDTA in 10mM Tris, pH8.5, 120°C for 3min, [TA804626])