

Product datasheet for **TA804622**

SGK196 (POMK) Mouse Monoclonal Antibody [Clone ID: OTI2B10]

Product data:

Product Type:	Primary Antibodies
Clone Name:	OTI2B10
Applications:	IHC, WB
Recommended Dilution:	WB 1:2000, IHC 1:150
Reactivity:	Human
Host:	Mouse
Isotype:	IgG1
Clonality:	Monoclonal
Immunogen:	Human recombinant protein fragment corresponding to amino acids 141-350 of human SGK196 (NP_115613) produced in E.coli.
Formulation:	PBS (pH 7.3) containing 1% BSA, 50% glycerol and 0.02% sodium azide.
Concentration:	1 mg/ml
Purification:	Purified from mouse ascites fluids or tissue culture supernatant by affinity chromatography (protein A/G)
Conjugation:	Unconjugated
Storage:	Store at -20°C as received.
Stability:	Stable for 12 months from date of receipt.
Predicted Protein Size:	39.9 kDa
Gene Name:	protein-O-mannose kinase
Database Link:	NP_115613 Entrez Gene 84197 Human Q9H5K3



[View online »](#)

Background:

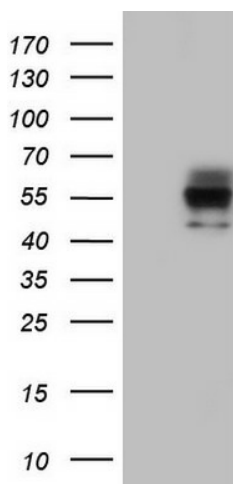
This gene encodes a protein that may be involved in the presentation of the laminin-binding O-linked carbohydrate chain of alpha-dystroglycan (a-DG), which forms transmembrane linkages between the extracellular matrix and the exoskeleton. Some pathogens use this O-linked carbohydrate unit for host entry. Loss of function compound heterozygous mutations in this gene were found in a human patient affected by the Walker-Warburg syndrome (WWS) phenotype. Mice lacking this gene contain misplaced neurons (heterotopia) in some regions of the brain, possibly from defects in neuronal migration. Alternative splicing of this gene results in multiple transcript variants. [provided by RefSeq, May 2013]

Synonyms:

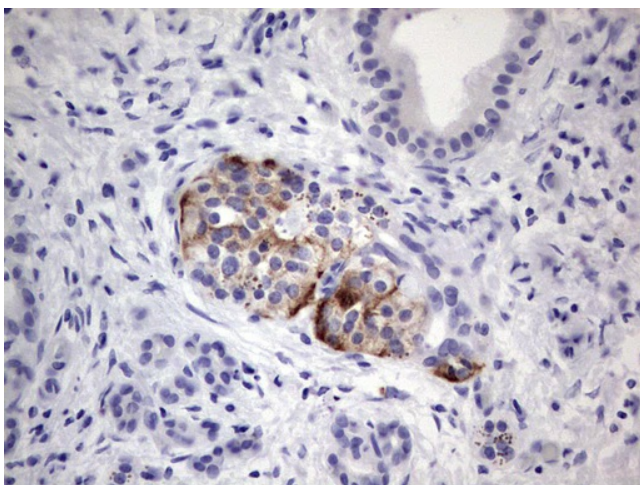
MDDGA12; MDDGC12; SGK196

Protein Families:

Druggable Genome, Protein Kinase, Transmembrane

Product images:

HEK293T cells were transfected with the pCMV6-ENTRY control (Left lane) or pCMV6-ENTRY SGK196 ([RC222797], Right lane) cDNA for 48 hrs and lysed. Equivalent amounts of cell lysates (5 ug per lane) were separated by SDS-PAGE and immunoblotted with anti-SGK196. Positive lysates [LY410261] (100ug) and [LC410261] (20ug) can be purchased separately from OriGene.



Immunohistochemical staining of paraffin-embedded Carcinoma of Human pancreas tissue using anti-SGK196 Mouse monoclonal antibody. (TA804622; heat-induced epitope retrieval by 1mM EDTA in 10mM Tris, pH8.5, 120°C for 3min). Heat-induced epitope retrieval by EDTA solution buffer pH 8.0 at 120°C for 3 min.