

## Product datasheet for **TA804618**

### Cytokeratin 19 (KRT19) Mouse Monoclonal Antibody [Clone ID: OTI8D1]

#### Product data:

Product Type:	Primary Antibodies
Clone Name:	OTI8D1
Applications:	IHC, WB
Recommended Dilution:	WB 1:2000, IHC 1:150
Reactivity:	Human
Host:	Mouse
Isotype:	IgG1
Clonality:	Monoclonal
Immunogen:	Human recombinant protein fragment corresponding to amino acids 240-390 of human KRT19 (NP_002267) produced in E.coli.
Formulation:	PBS (pH 7.3) containing 1% BSA, 50% glycerol and 0.02% sodium azide.
Concentration:	1 mg/ml
Purification:	Purified from mouse ascites fluids or tissue culture supernatant by affinity chromatography (protein A/G)
Conjugation:	Unconjugated
Storage:	Store at -20°C as received.
Stability:	Stable for 12 months from date of receipt.
Predicted Protein Size:	43.9 kDa
Gene Name:	keratin 19
Database Link:	<a href="#">NP_002267</a> <a href="#">Entrez Gene 3880 Human</a> <a href="#">P08727</a>



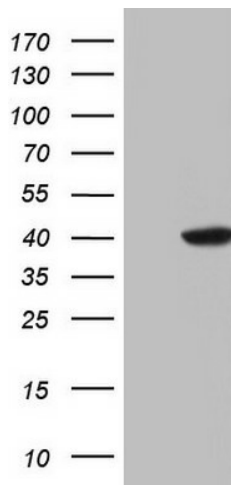
[View online »](#)

**Background:**

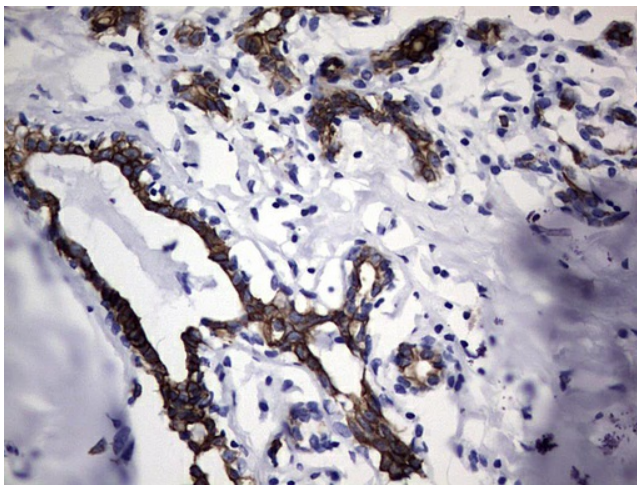
The protein encoded by this gene is a member of the keratin family. The keratins are intermediate filament proteins responsible for the structural integrity of epithelial cells and are subdivided into cytokeratins and hair keratins. The type I cytokeratins consist of acidic proteins which are arranged in pairs of heterotypic keratin chains. Unlike its related family members, this smallest known acidic cytokeratin is not paired with a basic cytokeratin in epithelial cells. It is specifically expressed in the periderm, the transiently superficial layer that envelopes the developing epidermis. The type I cytokeratins are clustered in a region of chromosome 17q12-q21. [provided by RefSeq, Jul 2008]

**Synonyms:**

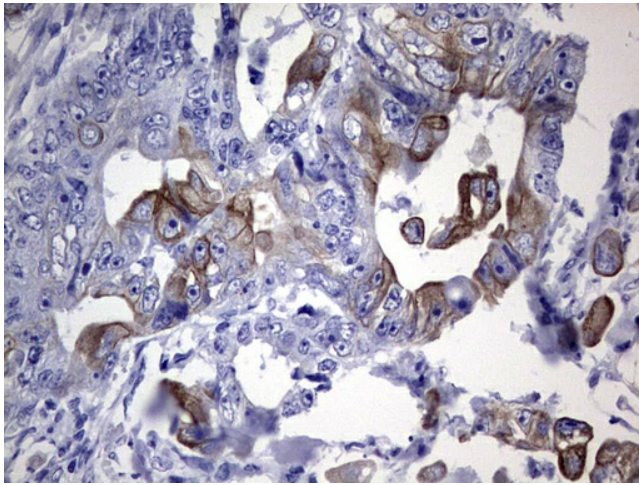
CK19; K1CS; K19

**Product images:**


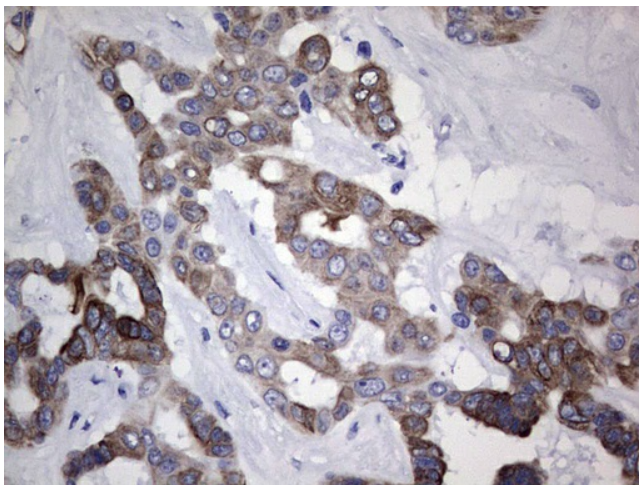
HEK293T cells were transfected with the pCMV6-ENTRY control (Left lane) or pCMV6-ENTRY KRT19 ([RC209707], Right lane) cDNA for 48 hrs and lysed. Equivalent amounts of cell lysates (5 ug per lane) were separated by SDS-PAGE and immunoblotted with anti-KRT19. Positive lysates [LY419428] (100ug) and [LC419428] (20ug) can be purchased separately from OriGene.



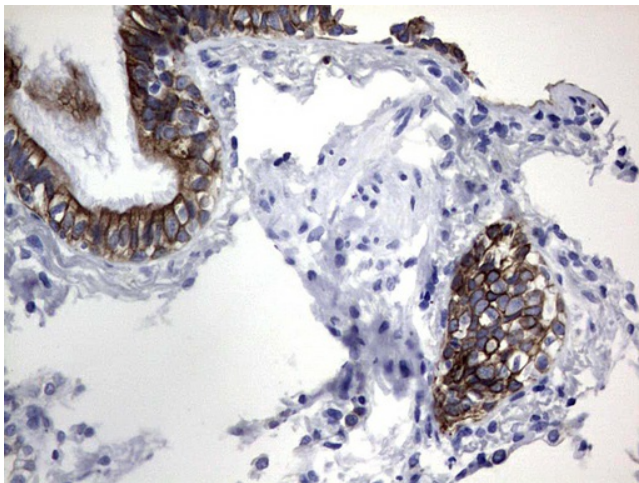
Immunohistochemical staining of paraffin-embedded Human breast tissue within the normal limits using anti-KRT19 mouse monoclonal antibody. (Heat-induced epitope retrieval by 1mM EDTA in 10mM Tris, pH8.5, 120°C for 3min, TA804618)



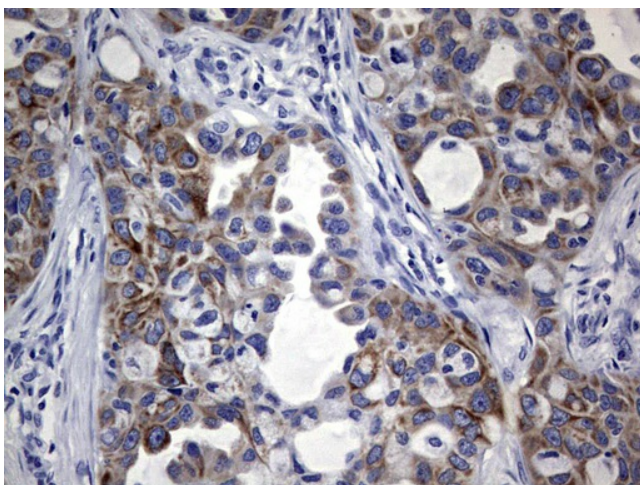
Immunohistochemical staining of paraffin-embedded Adenocarcinoma of Human colon tissue using anti-KRT19 mouse monoclonal antibody. (Heat-induced epitope retrieval by 1mM EDTA in 10mM Tris, pH8.5, 120°C for 3min, TA804618)



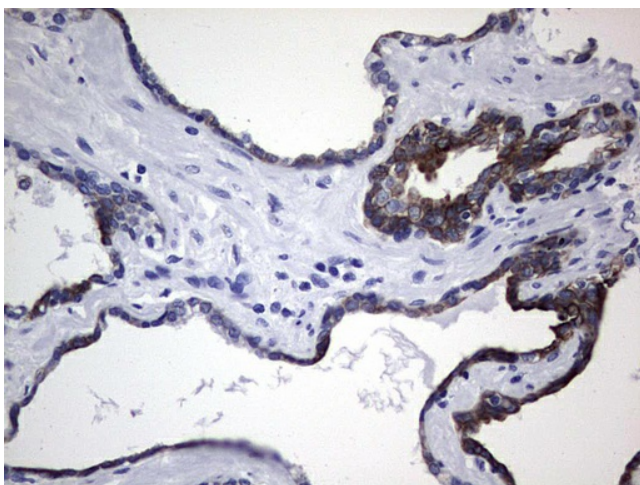
Immunohistochemical staining of paraffin-embedded Carcinoma of Human liver tissue using anti-KRT19 mouse monoclonal antibody. (Heat-induced epitope retrieval by 1mM EDTA in 10mM Tris, pH8.5, 120°C for 3min, TA804618)



Immunohistochemical staining of paraffin-embedded Human lung tissue within the normal limits using anti-KRT19 mouse monoclonal antibody. (Heat-induced epitope retrieval by 1mM EDTA in 10mM Tris, pH8.5, 120°C for 3min, TA804618)



Immunohistochemical staining of paraffin-embedded Carcinoma of Human lung tissue using anti-KRT19 mouse monoclonal antibody. (Heat-induced epitope retrieval by 1mM EDTA in 10mM Tris, pH8.5, 120°C for 3min, TA804618)



Immunohistochemical staining of paraffin-embedded Carcinoma of Human prostate tissue using anti-KRT19 mouse monoclonal antibody. (Heat-induced epitope retrieval by 1mM EDTA in 10mM Tris, pH8.5, 120°C for 3min, TA804618)